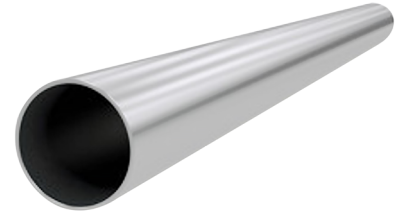


Dairy Tube

Stainless Steel Grade 304 and 316

Features

- 320 grit
- 6 metre lengths, Purchase per metre (enter quantity as '6' for 1 length)
- Sanitary (Standard AS1528.1) from 1" - 8"
- Also known in New Zealand as Stainless Sanitary Tube



Dimensions

Unit: mm (unless stated otherwise)

Size	2 1/2" (304) 63.5	5" (316) 127x1.5	5" (304) 127x1.6	1 1/4"(304) 6.35x0.9	5/16"(304) 7.94x0.9	3/8"(304) 9.53x1.2	4" (304) 101.6x1.6
Thickness	1.6	1.5		0.9	0.9	1.2	1.6
Weight kg/mtr				0.12	0.158	0.257	3.9861
Code	SDT46516	SDT612515	SDT412516	SDT40609	SDT40809	SDT40912	SDT410016
Size	1/2"(304) 12.7x1.6	6" (304) 152.4x1.6	6" (304) 152.4x2.0	5/8"(304) 15.88x1.5	3/4"(304) 19.05x1.6	8" (304) 203.2x2.0	7/8"(304) 22.23x1.5
Thickness	1.6	1.6	2.0	1.5	1.6	2.0	1.5
Weight kg/mtr		6.01		0.538	0.695	10	0.773
Code	SDT41216	SDT415016	SDT415020	SDT41615	SDT41916	SDT420020	SDT42216
Size	1"(304) 25.4x1.6	1 1/4" (304) 31.8x1.6	1 1/2"(304) 38.1x1.6	1 3/4"(304) 44.5x1.5	2" (304) 50.8x1.6	3" 76.2x1.6	3/8"(316) 9.53x1.2
Thickness	1.6	1.6	1.6	1.5	1.6	1.6	1.2
Weight kg/mtr	0.903	1.2018		1.625	1.96	2.9736	0.257
Code	SDT42516	SDT43216	SDT43816	SDT44515	SDT45016	SDT47516	SDT60912
Size	4" (316) 101.6x1.6	1/2"(316) 12.7x1.6	6" 152.4x1.6	5/8"(316) 15.88x1.5	3/4" (316) 19.05x1.6	8" (316) 203.2x2.0	1"(316) 25.4x1.5
Thickness	1.6	1.6		1.5	1.5	2.0	1.6
Weight kg/mtr	4.0112	0.44		0.538		10	0.903
Code	SDT610016	SDT61216	SDT615016	SDT61615	SDT61916	SDT620020	SDT62516



Size	1 1/4" (304) 31.8x1.6	1 1/2" (316) 38.1x1.6	2" (316) 50.8x1.6	2 1/2" (316) 63.5x1.5	2 1/2" (316) 63.5x1.6	3" (316) 76.2x1.6
Thickness	1.6	1.6	1.6	1.5	1.6	1.6
Weight kg/mtr	1.2018			2.343		2.9923
Code	SDT63216	SDT63816	SDT65016	SDT66515	SDT66516	SDT67516

