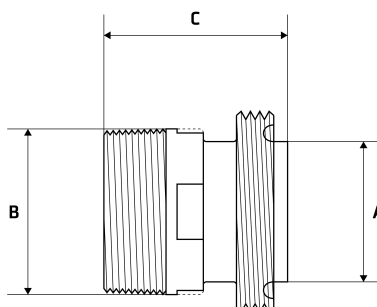


# BSP Nipple to RJT Male Adapter

## Features

- BSP Threaded End
- Working Pressure: 150lbs (psi) / 10bar
- Working Temperature: 250°C at 10bar
- Flat Spot For Ease Of Tightening
- BSP thread conforms with ISO 7-1/ISO 228-1
- Male Threads are Tapered (BSPT)



## Dimensions

Unit: mm (unless stated otherwise)

Size	1/2" 12.7x15NB	3/4" 19.05x20NB	1" 25.4x25NB	1 1/4" 31.8x32NB	1 1/2" 38.1x40NB	2" 50.8x50NB	2 1/2" 63.5x65NB
<b>A</b>	12.7	19.05	25.4	31.8	38.1	50.8	63.5
<b>B</b>	26.5	21.2	33.5	41.5	47.9	60	75.2
<b>C</b>	57.8	57.8	70.8	71	71.5	73	85.7
<b>Code</b>	SWNAMP15	SWNAMP20	SWNAMP25	SWNAMP32	SWNAMP40	SWNAMP50	SWNAMP65

Size	3" 76.2x80NB	4" 101.6x100NB
<b>A</b>	76.2	101.6
<b>B</b>	88.7	113.6
<b>C</b>	90	92.1
<b>Code</b>	SWNAMP80	SWNAMP100

