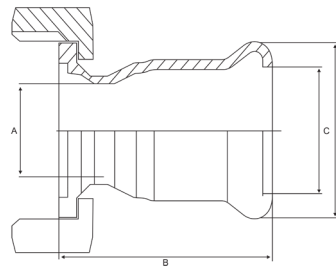


Press-Fit to RJT Hex Nut & Liner Adapter

Stainless Steel 316

Features

- Adapts from Press-Fit to RJT Weld Liner and Hex Nut
- Can be used as a union with Press-Fit to RJT Male Part and RJT Stepped Seal
- Note: Does not include indicator sleeve as pictured



Dimensions

Unit: mm (unless stated otherwise)

Size	108 x 4"	15 x 1/2"	22 x 3/4"	28 x 1"	35 x 1 1/4"	42 x 1 1/2"	54 x 2"
A	97.6	9.6	16	22.2	28.6	34.9	47.6
B	86	38	40	45	46	51	56
C	111	15.9	23	28.9	36	43	55
D	132.8	23.2	31.6	37.2	44.3	53.3	65.4
Code	UWJWL108	UWJWL15	UWJWL22	UWJWL28	UWJWL35	UWJWL42	UWJWL54

Size	76 x 3"
A	73
B	63
C	78
D	94.7
Code	UWJWL76

