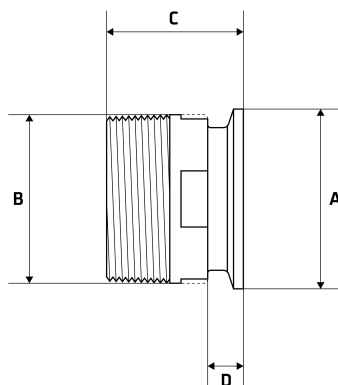


BSP Nipple to Tri Clover Adapter

Features

- BSP Threaded End - BSP Male
- Working Pressure: 150lbs (psi) / 10bar
- Working Temperature: 250°C at 10bar
- Flat Spot For Ease Of Tightening
- BSP thread conforms with ISO 7-1/ISO 228-1
- Male Threads are Tapered (BSPT)



Dimensions

Unit: mm (unless stated otherwise)

Size	1/2" 12.7x15NB	3/4" 19.05x20NB	1" 25.4x20NB	1" 25.4x25NB	1 1/4" 31.8x32NB	1 1/2" 38.1x40NB	2" 50.8x50NB
A	25.4	25.4	50.5	50.5	50.5	50.5	64
B	26.5	21.2	26.3	33.5	41.5	47.9	60
C	54	54	40	57.2	57.2	57.2	58.7
D	12.7	12.7	12.7	12.7	12.7	12.7	12.7
Code	SWNAFER15	SWNAFER20	SWNAFER2520	SWNAFER25	SWNAFER32	SWNAFER40	SWNAFER50

Size	2 1/2" 63.5x65NB	3" 76.2x80NB	4" 101.6x100NB
A	77.5	91	119
B	75.2	88.7	113.6
C	71.4	76.2	81
D	12.7	12.7	15.9
Code	SWNAFER65	SWNAFER80	SWNAFER100

