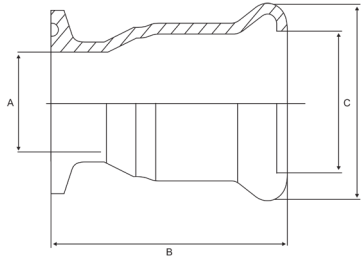


# Press-Fit to Tri Clover Adapter

Stainless Steel 316

## Features

- Adapts from Press-Fit to Tri Clover Ferrule
- Can be used as a union
- Note: Does not include indicator sleeve as pictured



## Dimensions

Unit: mm (unless stated otherwise)

Size	108 x 4"	15 x 1/2"	22 x 3/4"	28 x 1"	35 x 1 1/4"	42 x 1 1/2"	54 x 2"
<b>A</b>	97.3	9.4	15.8	22.1	28.5	34.8	47.5
<b>B</b>	86	38	40	45	46	51	56
<b>C</b>	111	15.9	23	28.9	36	43	55
<b>D</b>	132.8	23.2	31.6	37.2	44.3	53.3	65.4
<b>Code</b>	UWJFER108	UWJFER15	UWJFER22	UWJFER28	UWJFER35	UWJFER42	UWJFER54

Size	76 x 3"
<b>A</b>	72.9
<b>B</b>	63
<b>C</b>	78
<b>D</b>	94.7
<b>Code</b>	UWJFER76

