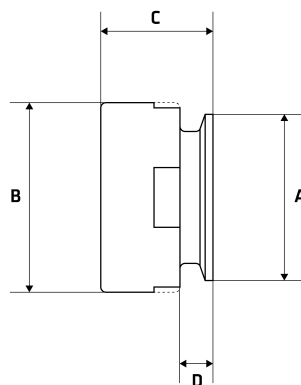


BSP Socket to Tri Clover Adapter

Features

- BSP Threaded End - BSP Female
- Working Pressure: 150lbs (psi) / 10bar
- Working Temperature: 250°C at 10bar
- Flat Spot For Ease Of Tightening
- BSP thread conforms with ISO 7-1/ISO 228-1
- Female Threads are Parallel (BSPP)



Dimensions

Unit: mm (unless stated otherwise)

Size	1/2" 12.7x15NB	3/4" 19.05x20NB	1" 25.4x25NB	1 1/4" 31.8x32NB	1 1/2" 38.1x40NB	2" 50.8x50NB	2 1/2" 63.5x65NB
A	25.2	25.2	50.5	50.5	50.5	64	77.5
B	30	33.3	41.3	47.6	55	73	84
C	41.3	41.3	41.3	49.2	49.2	49.2	49.2
D	12.7	12.7	12.7	12.7	12.7	12.7	12.7
Code	SWSAFER15	SWSAFER20	SWSAFER25	SWSAFER32	SWSAFER40	SWSAFER50	SWSAFER65

Size	3" 76.2x80NB	4" 101.6x100NB
A	91	119
B	100	125
C	49.2	49.2
D	12.7	15.9
Code	SWSAFER80	SWSAFER100

