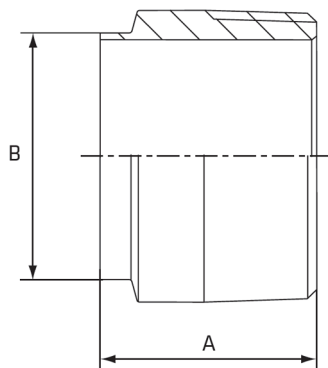


# Weld Nipple Adapter

Stainless Steel Grade 316

## Features

- BSP Threaded End
- Working Pressure: 150lbs (psi) / 10bar
- Working Temperature: 250°C at 10bar
- Butt Welds To Outside Diameter Tube Sizes
- Flat Spot For Ease Of Tightening



## Dimensions

Unit: mm (unless stated otherwise)

Size	1/2" 15NB - 12.7mm	3/4" 20NB - 19.05mm	1" 25NB - 25.4mm	1 1/4" 32NB - 31.8mm	1 1/2" 40NB - 38.1mm	2" 50NB - 50.8mm	2 1/2" 65NB - 63.5mm
<b>A</b>	41.3	41.3	44.5	44.5	44.5	46	58
<b>B</b>	12.7	19.05	25.4	31.8	38.1	50.8	63.5
<b>Code</b>	SWNA15	SWNA20	SWNA25	SWNA32	SWNA40	SWNA50	SWNA65

Size	3" 80NB - 76.2mm	4" 100NB - 101.6mm
<b>A</b>	63.7	65.2
<b>B</b>	76.2	101.6
<b>Code</b>	SWNA80	SWNA100

