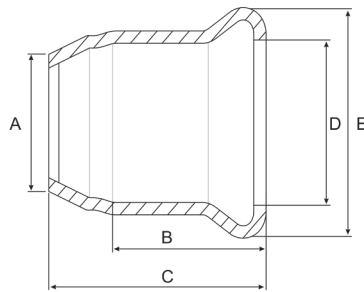


Press-Fit Weld Joint

Stainless Steel 316

Features

- Adapts from a Press-Fit connection and butt-welds to imperial dairy tube
- Press-Fit adapters to Union connections also available
- Note: Does not include indicator sleeve as pictured



Dimensions

Unit: mm (unless stated otherwise)

Size	15x12.7	22x19.05	28x25.4	35x31.8	42x38.1	54x50.8	76x76.2
A	15.2	22.2	28.2	31	42.3	54.4	76.7
B	20	21	23	26	30	35	53
C	25	27	32	33	38	43	70
D	15.9	23	28.9	36	43	55	78
E	23.2	31.6	37.2	44.3	53.3	65.4	94.7
Code	UWJ15	UWJ22	UWJ28	UWJ35	UWJ42	UWJ54	UWJ76

Size	108x101.6
A	108.8
B	75
C	93
D	111
E	132.8
Code	UWJ108

