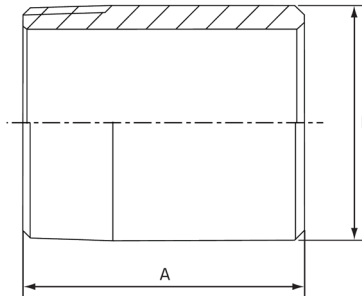


NPT Weld Nipple

Features

- NPT Threaded Ends
- Working Pressure: 150lbs (psi) / 10bar
- Working Temperature: 250°C at 10bar
- Investment lost wax casting manufactured to ISO 9001 : 2015
- NPT thread conforms with ASME B1.20.1
- Threads are Tapered NPT
- Butt Welds To Nominal Bore Pipe Sizes



Dimensions

Unit: mm (unless stated otherwise)

Size	1/4" 8NB	3/8" 10NB	1/2" 15NB	3/4" 20NB	1" 25NB	1 1/4" 32NB	1 1/2" 40NB
A	30	30	35	40	40	50	50
B	14	17	21.5	26.8	34	42.7	48.8
Code	NPTWN08	NPTWN10	NPTWN15	NPTWN20	NPTWN25	NPTWN32	NPTWN40

Size	2" 50NB	2 1/2" 65NB	3" 80NB	4" 100NB
A	50	60	70	80
B	61	77.5	90	115.8
Code	NPTWN50	NPTWN65	NPTWN80	NPTWN100

