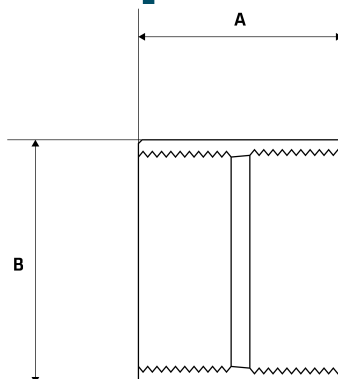


NPT-BSP Socket Adapter

Features

- 150lbs Pressure Rating
- NPT and BSP female threaded ends
- NPT Thread is Tapered, BSP Thread is Parallel
- NPT thread conforms with ASME B1.20.1 and the BSP thread conforms with ISO 7-1/ISO 228-1



Dimensions

Unit: mm (unless stated otherwise)

Size	1/4" 8NB	3/8" 10NB	1/2" 15NB	3/4" 20NB	1" 25NB	1 1/4" 32NB	1 1/2" 40NB
A	24.5	26	33	35	42	45	45
B	18	21	25	30.5	37	46.5	52.5
Code	NPTBSPS08	NPTBSPS10	NPTBSPS15	NPTBSPS20	NPTBSPS25	NPTBSPS32	NPTBSPS40

Size	2" 50NB
A	54.5
B	65.1
Code	NPTBSPS50

