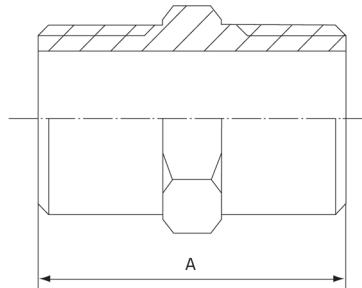


# NPT Hex Nipple

## Features

- NPT Threaded Ends
- Working Pressure: 150lbs (psi) / 10bar
- Working Temperature: 250°C at 10bar
- Investment lost wax casting manufactured to ISO 9001 : 2015
- NPT thread conforms with ASME B1.20.1
- Threads are Tapered NPT



## Dimensions

Unit: mm (unless stated otherwise)

Size	1/4" 8NB	3/8" 10NB	1/2" 15NB	3/4" 20NB	1" 25NB	1 1/4" 32NB	1 1/2" 40NB
<b>A</b>	29	29.5	35	39	44	39.5	49.5
<b>Code</b>	NPTHN08	NPTHN10	NPTHN15	NPTHN20	NPTHN25	NPTHN32	NPTHN40

Size	2" 50NB	2 1/2" 65NB	3" 80NB	4" 100NB
<b>A</b>	58.5	64	76	86.5
<b>Code</b>	NPTHN50	NPTHN65	NPTHN80	NPTHN100

