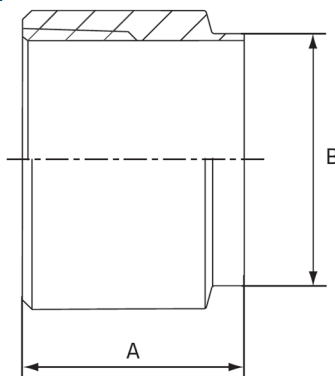


Weld Socket Adapter

Stainless Steel Grade 316

Features

- BSP Threaded End
- Working Pressure: 150lbs (psi) / 10bar
- Working Temperature: 250°C at 10bar
- Butt Welds To Outside Diameter Tube Sizes
- Flat Spot For Ease Of Tightening



Dimensions

Unit: mm (unless stated otherwise)

Size	1/2" 15NB - 12.7mm	3/4" 20NB - 19.05mm	1" 25NB - 25.4mm	1 1/4" 32NB - 31.8mm	1 1/2" 40NB - 38.1mm	2" 50NB - 50.8mm	2 1/2" 65NB - 63.5mm
A	28.6	28.6	28.6	36.5	36.5	36.5	41.3
B	12.7	19.05	25.4	31.8	38.1	50.8	63.5
Code	SWSA15	SWSA20	SWSA25	SWSA32	SWSA40	SWSA50	SWSA65

Size	3" 80NB - 76.2mm	4" 100NB - 101.6mm
A	46	50.8
B	76.2	101.6
Code	SWSA80	SWSA100

