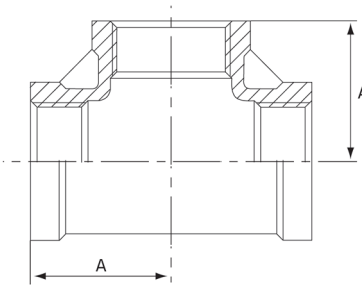


NPT Tee

Features

- NPT Threaded Ends
- Working Pressure: 150lbs (psi) / 10bar
- Working Temperature: 250°C at 10bar
- Investment lost wax casting manufactured to ISO 9001 : 2015
- NPT thread conforms with ASME B1.20.1
- Threads are Tapered NPT



Dimensions

Unit: mm (unless stated otherwise)

Size	1/8" 6NB	1/4" 8NB	3/8" 10NB	1/2" 15NB	3/4" 20NB	1" 25NB	1 1/4" 32NB
A	17.10	18.95	21.5	26.85	31.4	35.3	42.2
Code	NPTT06	NPTT08	NPTT10	NPTT15	NPTT20	NPTT25	NPTT32

Size	1 1/2" 40NB	2" 50NB
A	46.65	53.15
Code	NPTT40	NPTT50

