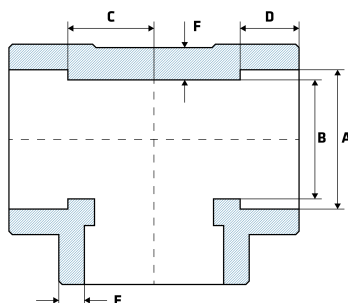


# 3000LB Socket Weld Tee

## Features

- Socket Weld to Pipe
- 3000LB rated
- ASME B16.11, ASTM A182
- Any measurements that include a \*, are indications that the measurement is a 'minimum measurement' as per their Manufacturing Standard.



## Dimensions

Unit: mm (unless stated otherwise)

Size	1/2" 15NB	3/4" 20NB	1" 25NB	1 1/4" 32NB	1 1/2" 40NB	2" 50NB	2 1/2" 65NB
A	21.8-22.2	27.2-27.6	33.9-34.3	42.7-43.1	48.8-49.2	61.2-61.7	
B	15-16.6	20.2-21.7	25.9-27.4	34.3-35.8	40.1-41.6	51.7-53.3	
C	15.5	19	22.5	27	32	38	
D	9.5*	12.5*	12.5*	12.5*	12.5*	16*	
E	4.67	4.9	5.69	6.07	6.35	6.93	
F	3.73*	3.91*	4.55*	4.85*	5.08*	5.54*	
Code	STSW3LB15	STSW3LB20	STSW3LB25	STSW3LB32	STSW3LB40	STSW3LB50	STSW3LB65

Size	3" 80NB	4" 100NB
A		
B		
C		
D		
E		
F		
Code	STSW3LB80	STSW3LB100

