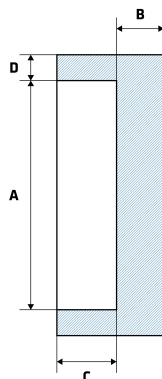


3000LB Socket Weld Round Cap

Features

- Socket Weld to Pipe
- 3000LB rated
- ASME B16.11, ASTM A182
- Any measurements that include a *, are indications that the measurement is a 'minimum measurement' as per their Manufacturing Standard.



Dimensions

Unit: mm (unless stated otherwise)

Size	1/2" 15NB	3/4" 20NB	1" 25NB	1 1/4" 32NB	1 1/2" 40NB	2" 50NB
A	21.8-22.2	27.2-27.6	33.9-34.3	42.7-43.1	48.8-49.2	61.2-61.7
B	6.4*	6.4*	9.6*	9.6*	11.2*	12.7*
C	9.5*	12.5*	12.5*	12.5*	12.5*	16*
D	4.67	4.9	5.69	6.07	6.35	6.93
Code	SRCSW3LB15	SRCSW3LB20	SRCSW3LB25	SRCSW3LB32	SRCSW3LB40	SRCSW3LB50

