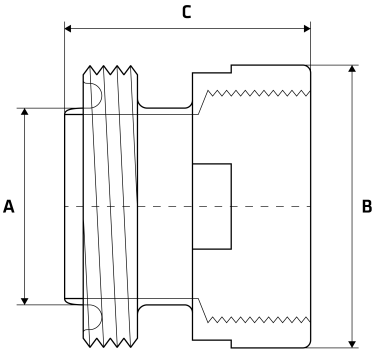


# BSP Socket to RJT Male Adapter

### Features

- No Need For Welding! Save Time And Effort With One-Piece Adapters
- BSP Threaded Socket
- Working Pressure: 150lbs (psi) / 10bar
- Working Temperature: 250°C at 10bar
- Flat Spots For Ease Of Tightening
- BSP thread conforms with ISO 7-1/ISO 228-1
- Female Threads are Parallel (BSPP)



### Dimensions

Unit: mm (unless stated otherwise)

Size	1" 25.4x25NB	1 1/2" 38.1x40NB	2" 50.8x50NB	2 1/2" 63.5x65NB	3" 76.2x80NB	4" 101.6x100NB
A	25.4	38.1	50.8	63.5	76.2	101.6
B	41.3	55	73	84	100	125
C	55.6	63.5	63.5	68.3	73	77.8
Code	SWSAMP25	SWSAMP40	SWSAMP50	SWSAMP65	SWSAMP80	SWSAMP100

