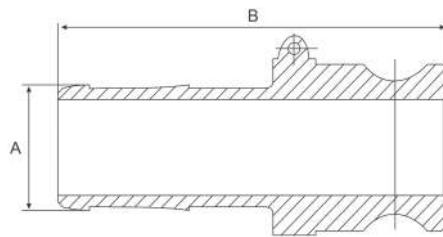


Camlock Type E

Stainless Grade 316

Features

- Male coupler to hosetail



Dimensions

Unit: mm (unless stated otherwise)

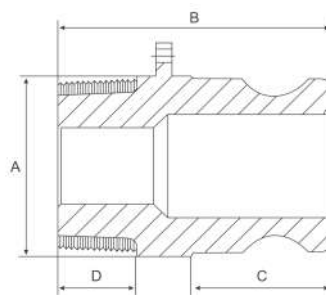
Size	12.7 1/2"	19.05 3/4"	25.4 1"	31.8 1 1/4"	38.1 1 1/2"	50.8 2"	63.5 2 1/2"	76.2 3"	101.6 4"	127 5"	152.4 6"
A	14.2	21.5	27.4	34.1	39.6	53.4	66.6	77.8	103.2	129	154
B	72.4	85.3	100.8	109	123.5	142	150.5	157	170.5	206	250.8
Code	SACLE12	SACLE20	SACLE25	SACLE30	SACLE40	SACLE50	SACLE65	SACLE75	SACLE100	SACLE125	SACLE150

Camlock Type F

Stainless Grade 316

Features

- Male coupler to male BSP



Dimensions

Unit: mm (unless stated otherwise)

Size	12.7 1/2"	19.05 3/4"	25.4 1"	31.8 1 1/4"	38.1 1 1/2"	50.8 2"	63.5 2 1/2"	76.2 3"	101.6 4"	127 5"	152.4 6"
A	26.6	32.4	38.5	47	56	65	80	95	122.5	150	181
B	53	55	67.8	78	76	83.5	97	99.5	105.8	112.5	120.3
C	26	26	34.8	40	41	46	50	51	53.8	57	57.3
D	17	19	19	24	22	24.5	29	31.5	33	37	40.5
Code	SCLF12	SCLF20	SCLF25	SCLF30	SCLF40	SCLF50	SCLF65	SCLF75	SCLF100	SCLF125	SCLF150

Stocked Items Non-Stocked Items