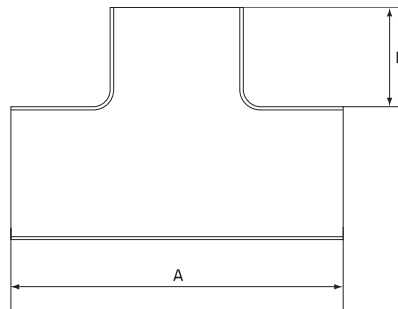


Equal Tee

Stainless Grade 316

Features

- Standard AS: 1528.3



Dimensions

Unit: mm (unless stated otherwise)

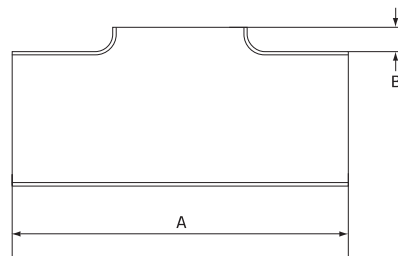
Size	12.7 1/2"	19.05 3/4"	25.4 1"	31.8 1 1/4"	38.1 1 1/2"	50.8 2"	63.5 2 1/2"	76.2 3"	101.6 4"
A	38.1	57.2	76.2	95.4	114.3	152.4	190.5	228.6	304.8
B	12.7	19.1	25.4	31.8	38.1	50.8	63.5	76.2	101.6
Thickness	1.6	1.6	1.6	1.6	1.6	1.6	1.6	1.6	2
Code	STET612	STET620	STET625	STET630	STET640	STET650	STET665	STET675	STET6100

Pulled Tee

Stainless Grade 316

Features

- Standard AS: 1528.3



"Larger sizes available.
Refer to page 156"

Dimensions

Unit: mm (unless stated otherwise)

Size	12.7 1/2"	19.05 3/4"	25.4 1"	31.8 1 1/4"	38.1 1 1/2"	50.8 2"	63.5 2 1/2"	76.2 3"	101.6 4"	152.4 6"
A	38.1	57.2	76.2	95.4	114.3	152.4	190.5	228.4	304.8	455
B	3	3	3	3	3	3	3	3	3	5
Thickness	1.6	1.6	1.6	1.6	1.6	1.6	1.6	1.6	2	2
Code	STPT612	STPT620	STPT625	STPT630	STPT640	STPT650	STPT665	STPT675	STPT6100	STPT6150

Stocked Items

Non-Stocked Items