

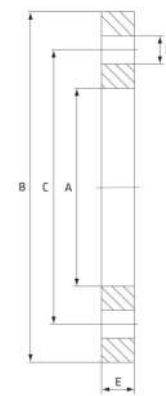
Table E Flange

Stainless Grade 316

Gasket

- Insertion Rubber 3.2mm
- Food Grade Quality (FQ) 3.2mm

"Flanges are stocked in Light Weight dimensions"



Unit: mm (unless stated otherwise)

Dimensions (Tube)

Size	12.7 1/2"	19.05 3/4"	25.4 1"	31.8 1 1/4"	38.1 1 1/2"	50.8 2"
A	13.3	19.6	27	33.4	39.7	52.4
B	95	100	115	120	135	150
C	67	73	83	87	98	114
D	14	14	14	14	14	18
E	6	6	7	8	9	10
E (Light weight)	9	9	9	9	9	9
Holes	4	4	4	4	4	4
Code (Flange)	STF12E	STF20E	STF25E	STF30E	STF40E	STF50E
Code (Gasket)	RFG12E	RFG20E	RFG25E	RFG30E	RFG40E	RFG50E
Code (FQ Gasket)	RFG12E-FQ	RFG20E-FQ	RFG25E-FQ	RFG30E-FQ	RFG40E-FQ	RFG50E-FQ

Size	63.5 2 1/2"	76.2 3"	101.6 4"	127 5"	152.4 6"	203.2 ID 8"
A	65.1	77.8	103.2	128.6	154	208.8
B	165	185	215	255	280	335
C	127	146	178	210	235	292
D	18	18	18	18	22	22
E	10	11	13	14	17	19
E (Light weight)	10	10	10	12	13	13
Holes	4	4	8	8	8	8
Code (Flange)	STF65E	STF75E	STF100E	STF125E	STF150E	STF200E
Code (Gasket)	RFG65E	RFG75E	RFG100E	RFG125E	RFG150E	RFG200E
Code (FQ Gasket)	RFG65E-FQ	RFG75E-FQ	RFG100E-FQ	RFG125E-FQ	RFG150E-FQ	RFG200E-FQ

Size	254 ID x 2mm 10"	254 ID x 3mm 10"	304.8 ID 12"	355.6 ID 14"	406.4 ID 16"
A	259.6	261.6	312.4	363.2	414
B	405	405	455	525	580
C	356	356	406	470	521
D	22	22	26	26	26
E	22	22	25	29	32
E (Light weight)	13	13	13	13	13
Holes	12	12	12	12	12
Code (Flange)	STF250E	STF250E	STF300E	STF350E	STF400E
Code (Gasket)	RFG250E	RFG250E	RFG300E	RFG350E	RFG400E
Code (FQ Gasket)	RFG250E-FQ	RFG250E-FQ	RFG300E-FQ	RFG350E-FQ	RFG400E-FQ



Dimensions (Pipe)

Unit: mm (unless stated otherwise)

Size	15 1/2"	20 3/4"	25 1"	32 1 1/4"	40 1 1/2"
A	23	28.36	35	43.8	49.9
B	95	100	115	120	135
C	67	73	83	87	98
D	14	14	14	14	14
E	6	6	7	8	9
E (Light weight)	9	9	9	9	9
Holes	4	4	4	4	4
Code (Flange)	SPF15E	SPF20E	SPF25E	SPF32E	SPF40E
Code (Gasket)	RFG15E	RFG20E	RFG25E	RFG32E	RFG40E
Code (FQ Gasket)	RFG15E-FQ	RFG20E-FQ	RFG25E-FQ	RFG32E-FQ	RFG40E-FQ

Size	50 2"	65 2 1/2"	80 3"	100 4"	125 5"
A	61.9	74.6	90.5	115.9	142.9
B	150	165	185	215	255
C	114	127	146	178	210
D	18	18	18	18	18
E	10	10	11	13	14
E (Light weight)	9	10	10	10	12
Holes	4	4	4	8	8
Code (Flange)	SPF50E	SPF65E	SPF80E	SPF100E	SPF125E
Code (Gasket)	RFG50E	RFG65E	RFG80E	RFG100E	RFG125E
Code (FQ Gasket)	RFG50E-FQ	RFG65E-FQ	RFG80E-FQ	RFG100E-FQ	RFG125E-FQ

Size	150 6"	200 8"	250 10"	300 12"
A	170.5	220.7	275	326
B	280	335	405	455
C	235	292	356	406
D	22	22	22	26
E	17	19	22	25
E (Light weight)	13	13	13	13
Holes	8	8	12	12
Code (Flange)	SPF150E	SPF200E	SPF250E	SPF300E
Code (Gasket)	RFG150E	RFG200E	RFG250E	RFG300E
Code (FQ Gasket)	RFG150E-FQ	RFG200E-FQ	RFG250E-FQ	RFG300E-FQ

Stocked Items Non-Stocked Items