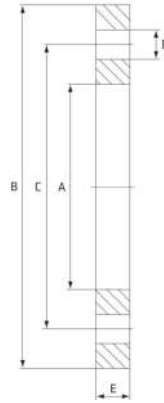


PN10/16 Flange

Stainless Grade 316

“Flanges are stocked in Light Weight dimensions”



Unit: mm (unless stated otherwise)

Dimensions (Tube)

Size	12.7 1/2"	19.05 3/4"	25.4 1"	31.8 1 1/4"	38.1 1 1/2"	50.8 2"	63.5 2 1/2"
A	13.3	20	27	33.4	39.7	52.4	65.1
B	95	105	115	140	150	165	185
C	65	75	85	100	110	125	145
D	14	14	14	18	18	18	18
E	14	16	16	16	16	18	18
E (Light Weight)	9	9	9	9	9	9	10
Holes	4	4	4	4	4	4	4
Code (Flange)	STF12PN10-16	STF20PN10-16	STF25PN10-16	STF30PN10-16	STF40PN10-16	STF50PN10-16	STF65PN10-16
Code (Gasket)	RFG12PN10-16	RFG20PN10-16	RFG25PN10-16	RFG30PN10-16	RFG40PN10-16	RFG50PN10-16	RFG65PN10-16

Size	76.2 3"	101.6 4"	127 5"	152.4 6"	203.2 ID 8"	254 ID 10"	304.8 ID 12"
A	77.8	103.2	128.6	154	208.8	259.6	312.4
B	200	220	250	285	340	405	460
C	160	180	210	240	295	355	410
D	18	18	18	22	22	26	26
E	20	20	22	22	24	28	28
E (Light Weight)	10	10	13	13	13	13	13
Holes	8	8	8	8	12	12	12
Code (Flange)	STF75PN10-16	STF100PN10-16	STF125PN10-16	STF150PN10-16	STF200PN16	STF250PN16	STF300PN16
Code (Gasket)	RFG75PN10-16	RFG100PN10-16	RFG125PN10-16	RFG150PN10-16	RFG200PN16	RFG250PN16	RFG300PN16

Dimensions (Pipe)

Unit: mm (unless stated otherwise)

Size	15 1/2"	20 3/4"	25 1"	32 1 1/4"	40 1 1/2"	50 2"	65 2 1/2"
A	23	28.36	35	43.8	49.9	61.9	74.6
B	95	105	115	140	150	165	185
C	65	75	85	100	110	125	145
D	14	14	14	18	18	18	18
E	14	16	16	16	16	18	18
E (Light Weight)	9	9	9	9	9	9	10
Holes	4	4	4	4	4	4	4
Code (Flange)	SPF15PN10-16	SPF20PN10-16	SPF25PN10-16	SPF32PN10-16	SPF40PN10-16	SPF50PN10-16	SPF65PN10-16
Code (Gasket)	RFG15PN10-16	RFG20PN10-16	RFG25PN10-16	RFG32PN10-16	RFG40PN10-16	RFG50PN10-16	RFG65PN10-16

Size	80 3"	100 4"	125 5"	150 6"	200 8"	250 10"	300 12"
A	90.5	115.9	142.9	170.5	220.7	275	326
B	200	220	250	285	340	405	460
C	160	180	210	240	295	355	410
D	18	18	18	22	22	26	26
E	20	20	22	22	24	28	28
E (Light Weight)	10	10	12	13	13	13	13
Holes	8	8	8	8	12	12	12
Code (Flange)	SPF80PN10-16	SPF100PN10-16	SPF125PN10-16	SPF150PN10-16	SPF200PN10-16	SPF250PN10-16	SPF300PN10-16
Code (Gasket)	RFG80PN10-16	RFG100PN10-16	RFG125PN10-16	RFG150PN10-16	RFG200PN10-16	RFG250PN10-16	RFG300PN10-16

