

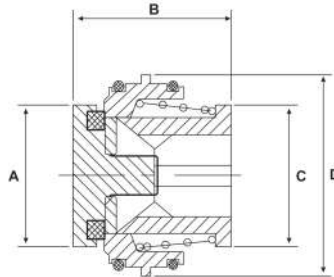
# Inline Non Return Valve

Stainless Steel 316

## Features

- Able to be clamped in centre of union for easy access
- Maximum pressure 145PSI / 10Bar
- Maximum working temperature 120°C (with EPDM seal)
- Spring actioned flow control

*"Can be used with Tri Clover and RJT unions. Refer to Unions section page 61"*



## Dimensions

Unit: mm (unless stated otherwise)

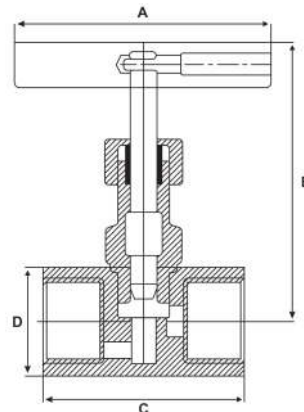
Size	25.4 1"	38.1 1 1/2"	50.8 2"	63.5 2 1/2"	76.2 3"	101.6 4"
A	16	27	40	52	65	89
B	30	30	33	35	38	42
C	16	27	40	52	65	89
D	25	38	50	63	76	101
Code	SINRV25	SINRV40	SINRV50	SINRV65	SINRV75	SINRV100

# Needle Valve

Stainless Steel 316

## Features

- BSP Threaded ends
- PTFE seal maximum temperature 200°C
- Maximum pressure 6000PSI/400Bar
- T handle operation



## Dimensions

Unit: mm (unless stated otherwise)

Size	6.35 1/4"	9.35 3/8"	12.7 1/2"	19.05 3/4"	25.4 1"
A	50	50	65	65	100
B	69	72	92	95	109
C	45	50	63	64	78
D	22	25	30	35	42
Code	SNV606	SNV609	SNV612	SNV620	SNV625

