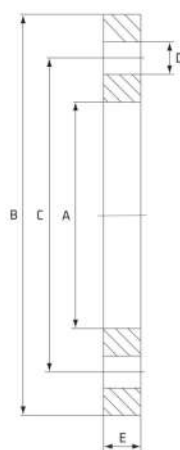


# Tube Flange

Stainless Grade 316

*“Flanges are stocked in Light Weight dimensions”*



Unit: mm (unless stated otherwise)

## Dimensions - Table E

Size	203.2 ID 8"	254 ID x 2mm 10"	254 ID x 3mm 10"	304.8 ID 12"	355.6 ID 14"	406.4 ID 16"
A	208.8	259.6	261.6	312.4	363.2	414
B	335	405	405	455	525	580
C	292	356	356	406	470	521
D	22	22	22	26	26	26
E	19	22	22	25	29	32
E (Light Weight)	13	13	13	13	13	13
Holes	8	12	12	12	12	12
Code (Flange)	STF200E	STF250E	STF25030E	STF300E	STF350E	STF400E
Code (Gasket)	RFG200E	RFG250E	RFG250E	RFG300E	RFG350E	RFG400E

## Dimensions - PN16

Unit: mm (unless stated otherwise)

Size	203.2 ID 8"	254 ID x 2mm 10"	254 ID x 3mm 10"	300 ID 12"
A	208.8	259.6	261.6	312.4
B	340	405	405	460
C	295	355	355	410
D	22	26	26	26
E	24	28	28	28
E (Light Weight)	13	13	13	13
Holes	12	12	12	12
Code (Flange)	STF200PN16	STF250PN16	STF25030PN16	STF300PN16
Code (Gasket)	RFG200PN16	RFG250PN16	RFG250PN16	RFG300PN16

## Dimensions - ANSI 150

Unit: mm (unless stated otherwise)

Size	203.2 ID 8"	254 ID x 2mm 10"	254 ID x 3mm 10"	300 ID 12"
A	208.8	259.6	261.6	312.4
B	345	405	405	485
C	299	362	362	432
D	22	26	26	26
E	29	30.5	30.5	32
E (Light Weight)	13	13	13	13
Holes	8	12	12	12
Code (Flange)	STF200A150	STF250A150	STF25030A150	STF300A150
Code (Gasket)	RFG200A150	RFG250A150	RFG250A150	RFG300A150

