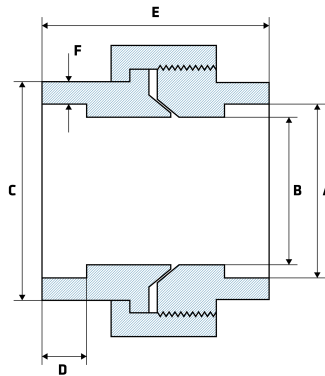


3000LB Socket Weld Mac Union

Features

- Socket Weld to Pipe
- 3000LB rated
- MSS-SP-83, ASTM A182
- Any measurements that include a *, are indications that the measurement is a 'minimum measurement' as per their Manufacturing Standard.



Dimensions

Unit: mm (unless stated otherwise)

Size	1/2" 15NB	3/4" 20NB	1" 25NB	1 1/4" 32NB	1 1/2" 40NB	2" 50NB
A	21.72-22.23	27.05-27.56	33.78-34.29	42.55-43.05	48.64-49.15	61.11-61.62
B	15.04-16.56	20.17-21.69	25.88-27.41	34.29-35.81	40.13-41.66	51.74-53.26
C	31.2*	37.1*	45.5*	54.9*	61.5*	75.2*
D	9.7*	12.7*	12.7*	12.7*	12.7*	15.7*
E	49	56.9	62	71.1	76.5	86.1
F	4.09*	4.27*	4.98*	5.28*	5.54*	6.05*
Code	SMUSW3LB15	SMUSW3LB20	SMUSW3LB25	SMUSW3LB32	SMUSW3LB40	SMUSW3LB50

