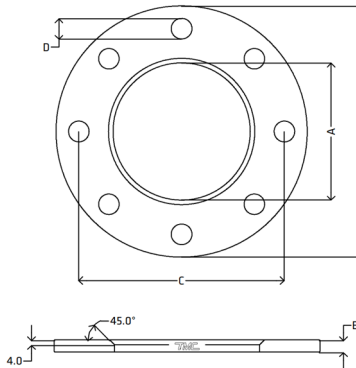


Backing Ring PN10-16

EN1092-1 Bolt Pattern

Features

- To suit Imperial Sized Tube and Schedule Pipe, with the use of a Neck Ring or Stub End
- Forged to EN10222-5
- All sharp edges have been chamfered by 0.5 mm at 45°
- Pressure Ratings are not available for this product
- Please note that these Backing Rings do not conform to EN1092-1, however they are suitable for use with EN1092-1 Flanges as the bolt pattern matches that standard
- Please also note, that some old stock is CAST (316) and Test Certificates are will not be available. New incoming stock will be Forged to EN10222-5 (1.4404) which we can provide Test Certificates for. Refer to the grade to determine this



Dimensions

Unit: mm (unless stated otherwise)

Size	2"	2 1/2"	3"	4"	5"	6"	8"
	50.8/50NB/DN50	63.5/65NB/DN65	76.2/80NB/DN80	101.6/100NB/DN100	127.0/125NB/DN125	152.4/150NB/DN150	203.2/200NB/DN200
A	66.0	78.5	94.5	120.0	148.0	174.5	225.5
B	165.0	185.0	200.0	220.0	250.0	285.0	340.0
C	125.0	145.0	160.0	180.0	210.0	240.0	295.0
D	4x18.0	4x18.0	8x18.0	8x18.0	8x18.0	8x22.0	12x22.0
E	9.0	10.0	10.0	10.0	12.0	13.0	13.0
Thickness	9.0	10.0	10.0	10.0	12.0	13.0	13.0
Code	SBR50PN10-16	SBR65PN10-16	SBR80PN10-16	SBR100PN10-16	SBR125PN10-16	SBR150PN10-16	SBR200PN16



Size	10" 254.0/250NB/DN250	12" 304.8/300NB/DN300
A	280.5	331.0
B	405.0	460.0
C	355.0	410.0
D	12x26.0	12x26.0
E	13.0	13.0
Thickness	13.0	13.0
Code	SBR250PN16	SBR300PN16

