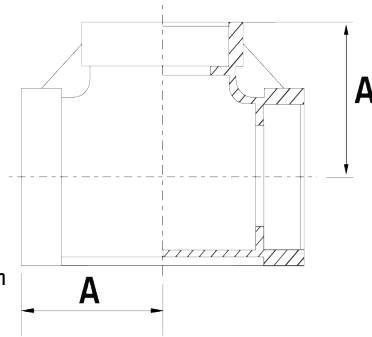


150LB Socket Weld Tee

Features

- Socket Welded Ends
- Working Pressure: 150lbs (psi) / 10bar
- Working Temperature: 250°C at 10bar
- Investment lost wax casting manufactured to ISO 9001 : 2015
- Thread ends conform to ISO 7-1 & ISO 228-1
- Mill Test Certificates (EN10201 Type 2.2) available with all sizes



Dimensions

Unit: mm (unless stated otherwise)

Size	1/2" 15NB	3/4" 20NB	1" 25NB	1 1/4" 32NB	1 1/2" 40NB	2" 50NB	2 1/2" 65NB
A	26.85	31.40	35.35	42.25	43	53.15	67.95
Code	STSW1LB15#	STSW1LB20#	STSW1LB25#	STSW1LB32#	STSW1LB40#	STSW1LB50#	STSW1LB65#

Size	3" 80NB	4" 100NB
A	78	93
Code	STSW1LB80#	STSW1LB100#

