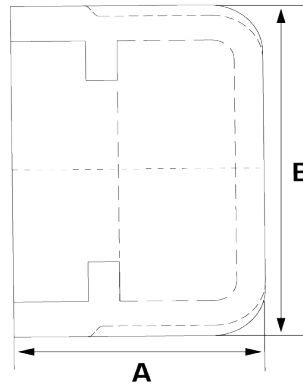


# 150LB Socket Weld Round Cap

## Features

- Socket Welded Ends
- Working Pressure: 150lbs (psi) / 10bar
- Working Temperature: 250°C at 10bar
- Investment lost wax casting manufactured to ISO 9001 : 2015
- Mill Test Certificates (EN10201 Type 2.2) available with all sizes



## Dimensions

Unit: mm (unless stated otherwise)

Size	1/2" 15NB	3/4" 20NB	1" 25NB	1 1/4" 32NB	1 1/2" 40NB	2" 50NB	2 1/2" 65NB
<b>A</b>	20	22	26	28	55.5	67	39
<b>B</b>	26.2	32.5	39.8	49	32.4	33.5	90
<b>Code</b>	SRCSW1LB15#	SRCSW1LB20#	SRCSW1LB25#	SRCSW1LB32#	SRCSW1LB40#	SRCSW1LB50#	SRCSW1LB65#

Size	3" 80NB	4" 100NB
<b>A</b>	41	41
<b>B</b>	100	127.5
<b>Code</b>	SRCSW1LB80#	SRCSW1LB100#

