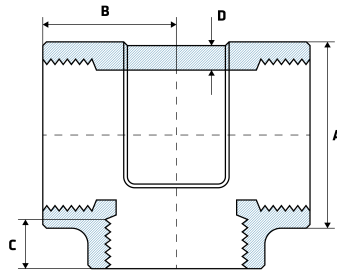


## 3000LB BSP Tee

### Features

- 3000LB Rated
- ASME B16.11, ASTM A182
- Any measurements that include a \*, are indications that the measurement is a 'minimum measurement' as per their Manufacturing Standard.



### Dimensions

Unit: mm (unless stated otherwise)

Size	1/2" 15NB	3/4" 20NB	1" 25NB	1 1/4" 32NB	1 1/2" 40NB	2" 50NB
<b>A</b>	38	46	56	62	75	84
<b>B</b>	33	38	44	51	60	64
<b>C</b>	13.6*	13.9*	17.3*	18*	18.4*	19.2*
<b>D</b>	4.09*	4.32*	4.98*	5.28*	5.56*	7.14*
<b>Code</b>	ST3LB15	ST3LB20	ST3LB25	ST3LB32	ST3LB40	ST3LB50

