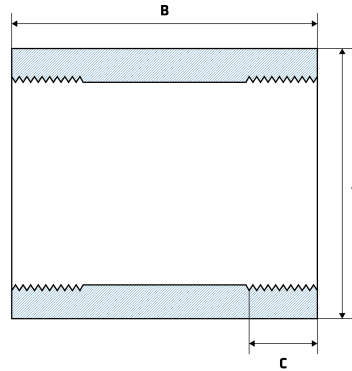


3000LB BSP Socket

Features

- 3000LB Rated
- ASME B16.11, ASTM A182
- Any measurements that include a *, are indications that the measurement is a 'minimum measurement' as per their Manufacturing Standard.



Dimensions

Unit: mm (unless stated otherwise)

Size	1/2" 15NB	3/4" 20NB	1" 25NB	1 1/4" 32NB	1 1/2" 40NB	2" 50NB
A	28	35	44	57	64	76
B	48	51	60	67	79	86
C	13.6*	13.9*	17.3*	18*	18.4*	19.2*
Code	SS3LB15	SS3LB20	SS3LB25	SS3LB32	SS3LB40	SS3LB50

