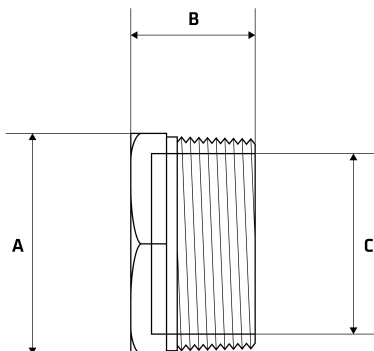


BSP Hex Plug

Features

- BSP Threaded Ends
- Working Pressure: 150lbs (psi) / 10bar
- Working Temperature: 250°C at 10bar
- Investment lost wax casting manufactured to ISO 9001 : 2015
- BSP thread conforms with ISO 7-1/ISO 228-1
- Male Threads are Tapered (BSPT)
- Mill Test Certificates (EN10201 Type 2.2) available with all sizes
- Hollow Centre



Dimensions

Unit: mm (unless stated otherwise)

Size	1/8" 6NB	1/4" 8NB	3/8" 10NB	1/2" 15NB	3/4" 20NB	1" 25NB	1 1/4" 32NB
A	12.9	15.9	19.8	22.9	27.5	34	43
B	15.9	18	19.3	21	22	24	27.5
C			9.5	14.5	18.8	24.7	32.5
Code	SHP06	SHP08	SHP10	SHP15	SHP20	SHP25	SHP32

Size	1 1/2" 40NB	2" 50NB	2 1/2" 65NB	3" 80NB	4" 100NB
A	49.8	61.5	79	91.4	117
B	31	32.5	40.5	41.7	45
C	38.3	50.5	64.5	76.5	105
Code	SHP40	SHP50	SHP65	SHP80	SHP100

