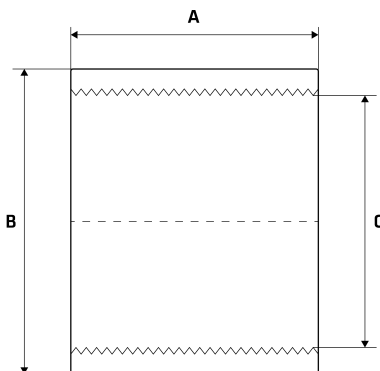


# BSP Socket

## Features

- Female BSP thread (parallel), which conforms with ISO 7-1/ISO 228-1
- Investment lost wax casting manufactured to ISO 9001
- Working Pressure: 10.3 bar (150.0 PSI)
- Working Temperature: 250°C at 10.3 bar (150.0 PSI)
- Bursting Pressure: Unavailable
- Mill Test Certifications available for all sizes (EN 10201 Type 2.2)



## Dimensions

Unit: mm (unless stated otherwise)

Size	1/8" 6NB	1/4" 8NB	3/8" 10NB	1/2" 15NB	3/4" 20NB	1" 25NB	1 1/4" 32NB
<b>A</b>	17	24.5	26	33	36	43	48
<b>B</b>	15	18	21.3	25	31.8	39.5	49.3
<b>C</b>	8.7	11.8	15.2	19	24.5	30.7	39.5
<b>Code</b>	SS06	SS08	SS10	SS15	SS20	SS25	SS32

Size	1 1/2" 40NB	2" 50NB	2 1/2" 65NB	3" 80NB	4" 100NB	6" 150NB
<b>A</b>	48	56	65	71	81	92
<b>B</b>	55.5	69	87	100	122	174
<b>C</b>	45.2	57	72.5	85.2		160.8
<b>Code</b>	SS40	SS50	SS65	SS80	SS100	SS150

