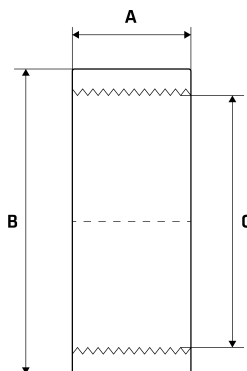


BSP Half Socket

Features

- Ideal For Tank Applications
- Female BSP thread (parallel), which conforms with ISO 7-1/ISO 228-1
- Investment lost wax casting manufactured to ISO 9001
- Working Pressure: 10.3 bar (150.0 PSI)
- Working Temperature: 250°C at 10.3 bar (150.0 PSI)
- Bursting Pressure: Unavailable
- Mill Test Certifications available for all sizes (EN 10201 Type 2.2)



Dimensions

Unit: mm (unless stated otherwise)

Size	1/4" 8NB	3/8" 10NB	1/2" 15NB	3/4" 20NB	1" 25NB	1 1/4" 32NB	1 1/2" 40NB
A	12	12	15	16	19.5	22	22
B	18	21	26	31	37	48	54
C		15.2	19	24.5	30.7	39.5	45.2
Code	SHS08	SHS10	SHS15	SHS20	SHS25	SHS32	SHS40

Size	2" 50NB
A	26
B	68
C	57
Code	SHS50

