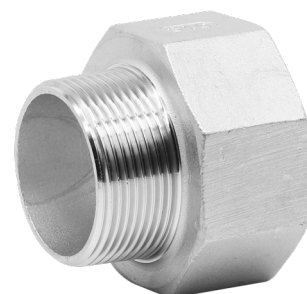
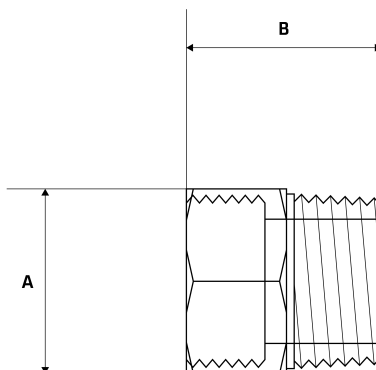


BSP Extension Socket

Features

- BSP Threaded Ends
- Working Pressure: 150lbs (psi) / 10bar
- Working Temperature: 250°C at 10bar
- Investment lost wax casting manufactured to ISO 9001 : 2008
- BSP thread conforms with ISO 7-1/ISO 228-1
- Male Threads are Tapered (BSPT), Female Threads are Parallel (BSPP)
- Mill Test Certificates (EN10201 Type 2.2) available with all sizes



Dimensions

Unit: mm (unless stated otherwise)

Size	1/4"x1/4" 8NBx8NB	3/8"x3/8" 10NBx10NB	1/2"x1/2" 15NBx15NB	3/4"x3/4" 20NBx20NB	1"x1" 25NBx25NB
A	15	18	25.5	30.5	36
B	28	27.7	33.5	37	38
Code	SES08	SES10	SES15	SES20	SES25

