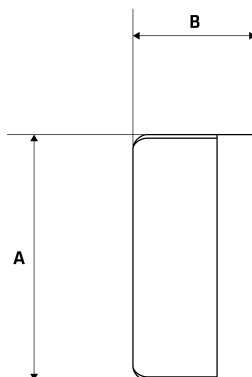


# BSP Round Cap

## Features

- BSP Threaded Ends
- Working Pressure: 150lbs (psi) / 10bar
- Working Temperature: 250°C at 10bar
- Investment lost wax casting manufactured to ISO 9001 : 2015
- BSP thread conforms with ISO 7-1/ISO 228-1
- Female Threads are Parallel (BSPP)
- Mill Test Certificates (EN10201 Type 2.2) available with all sizes



## Dimensions

Unit: mm (unless stated otherwise)

Size	1/8" 6NB	1/4" 8NB	3/8" 10NB	1/2" 15NB	3/4" 20NB	1" 25NB	1 1/4" 32NB
<b>A</b>	15	18	21	26.2	32.5	40	49
<b>B</b>	14	18	18	20	22	22.5	28
<b>Code</b>	SRC06	SRC08	SRC10	SRC15	SRC20	SRC25	SRC32

Size	1 1/2" 40NB	2" 50NB
<b>A</b>	55.5	67
<b>B</b>	26.5	33.5
<b>Code</b>	SRC40	SRC50

