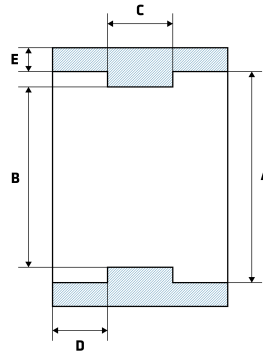


# 3000LB Socket Weld Socket

## Features

- Socket Weld to Pipe
- 3000LB rated
- ASME B16.11, ASTM A182
- Any measurements that include a \*, are indications that the measurement is a 'minimum measurement' as per their Manufacturing Standard.



## Dimensions

Unit: mm (unless stated otherwise)

Size	1/2" 15NB	3/4" 20NB	1" 25NB	1 1/4" 32NB	1 1/2" 40NB	2" 50NB	2 1/2" 65NB
<b>A</b>	21.8-22.2	27.2-27.6	33.9-34.3	42.7-43.1	48.8-49.2	61.2-61.7	
<b>B</b>	15-16.6	20.2-21.7	25.9-27.4	34.3-35.8	40.1-41.6	51.7-53.3	
<b>C</b>	9.5	9.5	12.5	12.5	12.5	19	
<b>D</b>	9.5*	12.5*	12.5*	12.5*	12.5*	16*	
<b>E</b>	4.67	4.9	5.69	6.07	6.35	6.93	
<b>Code</b>	SSSW3LB15	SSSW3LB20	SSSW3LB25	SSSW3LB32	SSSW3LB40	SSSW3LB50	SSSW3LB65

Size	3" 80NB	4" 100NB
<b>A</b>		
<b>B</b>		
<b>C</b>		
<b>D</b>		
<b>E</b>		
<b>Code</b>	SSSW3LB80	SSSW3LB100

