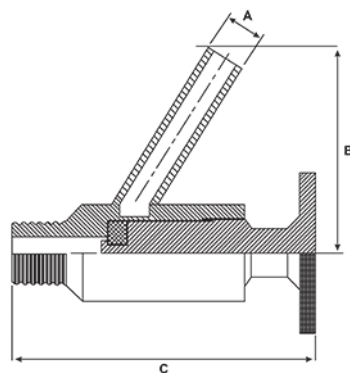


BSP Sampling Valve

Features

- BSP threaded end
- Maximum temperature rating 120°C
- PTFE seal maximum temperature 200°C
- Maximum pressure 145PSI / 10Bar



Unit: mm (unless stated otherwise)

Dimensions

Size	1/2" 15NB
A	8
B	43
C	90
Code	SSVT12

