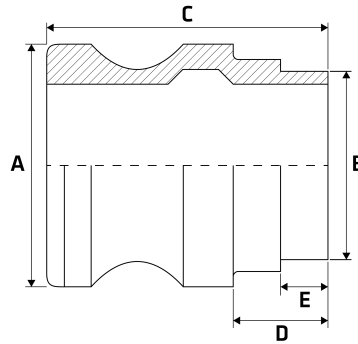


Camlock Type 'TM'

Features

- Male coupler
- Butt weld end to suit imperial tube



Dimensions

Unit: mm (unless stated otherwise)

Size	3/4" 19.05	1" 25.4	1 1/4" 31.8	1 1/2" 38.1	2" 50.8	2 1/2" 63.5	3" 76.2
A	33.02	37.65	46.6	53.4	64.5	77.3	93.5
B	19.05	25.4	31.8	38.1	50.8	63.5	76.2
C	52	59.3	64.5	66	71	73	75
D	25	25	25	25	25	25	25
E	10	10	10	10	10	10	10
Code	SCLTM20	SCLTM25	SCLTM30	SCLTM40	SCLTM50	SCLTM65	SCLTM75

Size	4" 101.6	6" 152.4
A	121.1	178
B	101.6	152.4
C	77.8	82.3
D	25	25
E	10	10
Code	SCLTM100	SCLTM150

