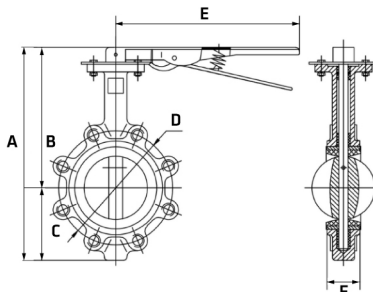


PN10-16 Lugged Butterfly Valve

Features

- PN10-16 threaded stud pattern
- Maximum nominal working pressure 230PSI / 16Bar
- EPDM seal temperature rating -20°C to 120°C
- EPDM is suitable for hot water, steam, alcohols, coolants, acids and bases.
- Lockable Lever with 10 position stainless steel notch plate
- Additional information of Mounting Plate dimensions available on request



Dimensions

Unit: mm (unless stated otherwise)

Size	1 1/2" DN40	2" DN50	2 1/2" DN65	3" DN80	4" DN100	5" DN125	6" DN150
A	225	275	298	270	348	374	397
B	159	193	207	175	233	246	258
C	66	82	91	95	115	128	139
D	110	125	145	160	180	210	240
E	220	220	220	220	260	260	260
F	32	42	45	44.2	51.1	54.5	54.8
Code	CILBV40PN10-16	CILBV50PN10-16	CILBV65PN10-16	CILBV80PN10-16	CILBV100PN10-16	CILBV125PN10-16	CILBV150PN10-16

Size	8" DN200
A	455
B	279
C	175
D	295
E	365
F	59.6
Code	CILBV200PN16

