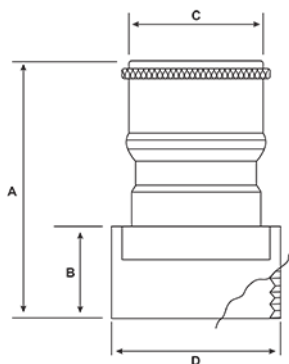


# BSP Male-Female Gas Fitting

## Features

- Ball lock plug with BSP socket (female thread)
- FULL Stainless Steel body. (Other Brands are Nickel Plated Bronze)
- Used for gas applications
- Maximum temperature rating 130°C
- Maximum pressure 215PSI / 15Bar



Unit: mm (unless stated otherwise)

## Dimensions

Size	1/2" 15NB
<b>A</b>	38
<b>B</b>	16.5
<b>C</b>	16
<b>D</b>	25
<b>Code</b>	GASMF15

