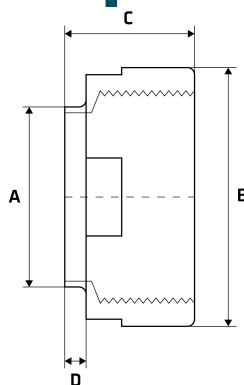


# BSP Weld Socket Adapter

## Features

- BSP Threaded End
- Working Pressure: 150lbs (psi) / 10bar
- Working Temperature: 250°C at 10bar
- Butt Welds To Outside Diameter Tube Sizes
- BSP thread conforms with ISO 7-1/ISO 228-1
- Female Threads are Parallel (BSPP)
- Flat Spots For Ease Of Tightening



## Dimensions

Unit: mm (unless stated otherwise)

Size	1/2" 12.7x15NB	3/4" 19.05x20NB	1" 25.4x25NB	1 1/4" 31.8x32NB	1 1/2" 38.1x40NB	2" 50.8x50NB	2 1/2" 63.5x65NB
<b>A</b>	12.7	19.05	25.4	31.8	38.1	50.8	63.5
<b>B</b>	30	33.3	41.3	47.6	55	73	84
<b>C</b>	28.6	28.6	28.6	36.5	36.5	36.5	41.3
<b>D</b>	5.6	5.6	5.6	6	6	6	6
<b>Code</b>	SWSA15	SWSA20	SWSA25	SWSA32	SWSA40	SWSA50	SWSA65

Size	3" 76.2x80NB	4" 101.6x100NB
<b>A</b>	76.2	101.6
<b>B</b>	100	125
<b>C</b>	46	50.8
<b>D</b>	6	8
<b>Code</b>	SWSA80	SWSA100

