

NOTES

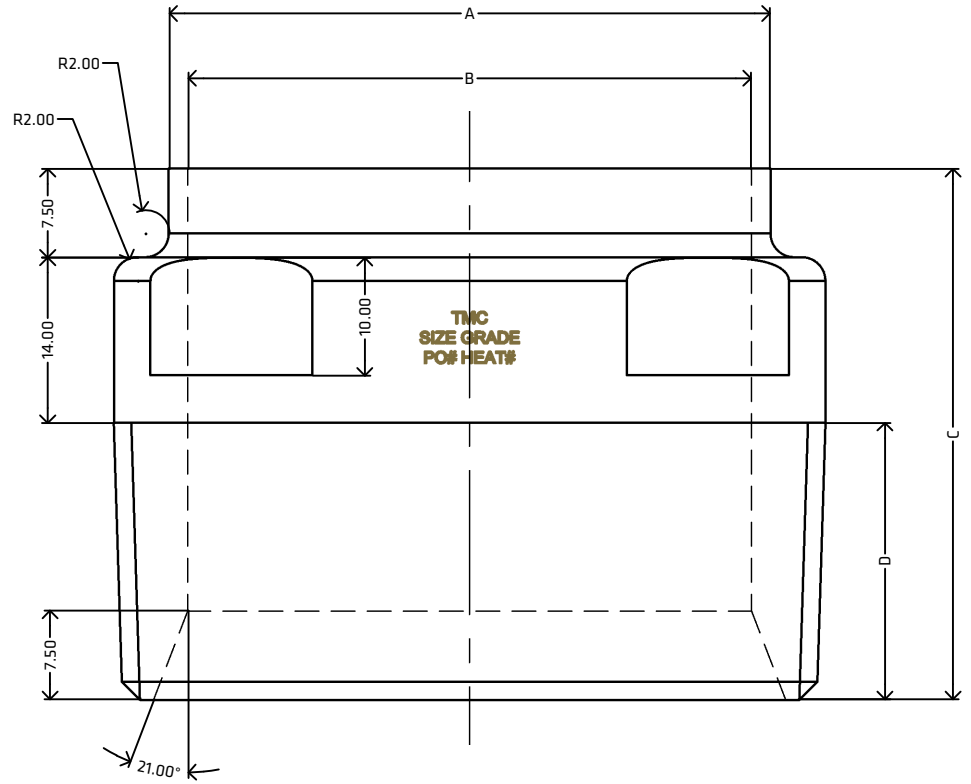
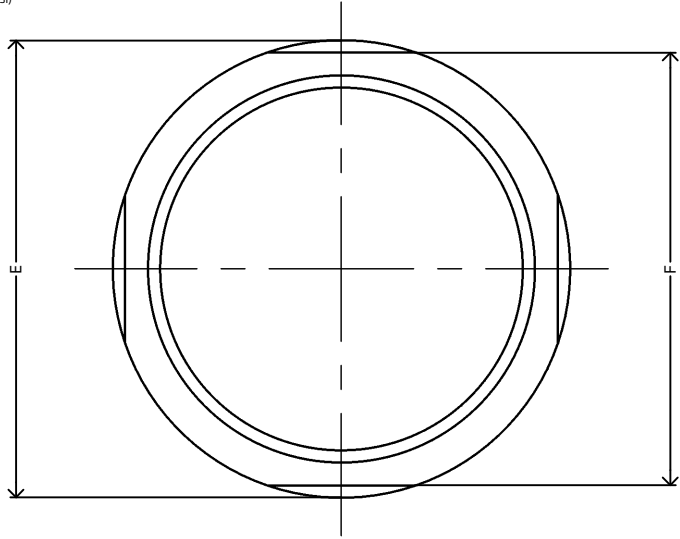
MATERIAL: STAINLESS STEEL
 GRADE: 316
 DIMENSIONAL STANDARD: TMC
 SURFACE FINISH: 1.6 µm Ra
 MANUFACTURING PROCESS: CNC MACHINED FROM FORGING OR SOLID BARS
 UDM: MILLIMETERS (mm)

SUPPLIER TO REMOVE AND/OR DEBUR ALL SHARP EDGES
 ERRORS AND OMISSIONS EXCEPTED

FEATURES

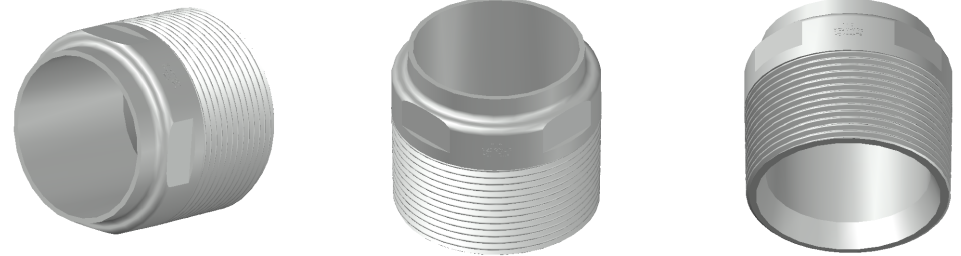
FLAT SPOTS ON THE SIDES TO AID WITH TIGHTENING
 READY TO WELD STRAIGHT ONTO IMPERIAL SIZED TUBING
 TAPERED BSP THREAD (BSPT) AS PER ISO 7-1
 WORKING PRESSURE: 10.3 BAR (150 PSI)
 WORKING TEMPERATURE: 250°C AT 10.3 BAR (150 PSI)

[VIEW ONLINE](#)



MEASUREMENTS

CODE	SIZE	THREAD	A	B	C	D	E	F
SWNA15	12.7x15NB	1/2" BSPT	12.7	9.5	34.66	13.16	21.27	17.27
SWNA20	19.05x20NB	3/4" BSPT	19.05	15.85	36.03	14.53	26.75	22.75
SWNA25	25.4x25NB	1" BSPT	25.4	22.2	38.29	16.79	33.65	29.65
SWNA32	31.8x32NB	1 1/4" BSPT	31.8	28.6	40.6	19.1	42.31	38.31
SWNA40	38.1x32NB	1 1/2" BSPT	38.1	34.9	40.6	19.1	48.2	44.2
SWNA50	50.8x50NB	2" BSPT	50.8	47.6	44.88	23.38	60.08	56.08
SWNA65	63.5x65NB	2 1/2" BSPT	63.5	60.3	48.16	26.66	75.76	71.76
SWNA80	76.2x80NB	3" BSPT	76.2	73.0	51.34	29.84	88.46	84.46
SWNA100	101.6x100NB	4" BSPT	101.6	98.4	57.3	35.8	113.68	109.68



THEMETALCOMPANY TALK: 0508 304 316 VIEW: www.themetalcompany.co.nz TYPE: sales@themetalcompany.co.nz VISIT: 149 Alabama Rd, Blenheim 7201, NZ	FILE	TMC - SWNA.DWG		CODE	SWNA	
	AUTHOR	CALEB G. - 28/07/23	STATUS	COMPLETE	SIZE	--
	CHECKED	BRENTLY F. - 28/07/23	SHEET	A4	DESC	BSP WELD NIPPLE ADAPTER
	REV	1.0	SCALE	NOT TO SCALE		