

NOTES

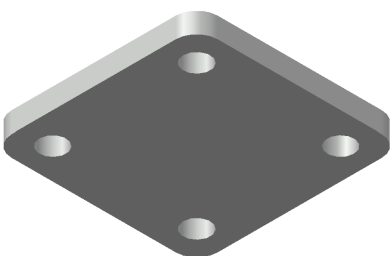
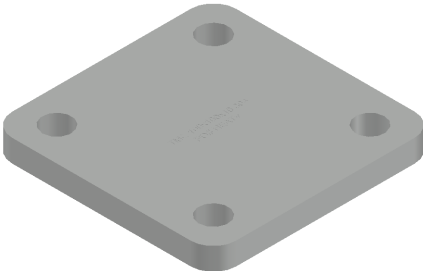
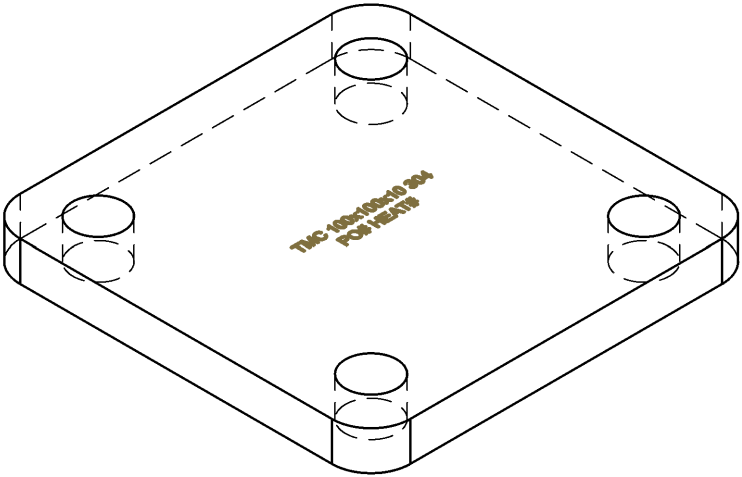
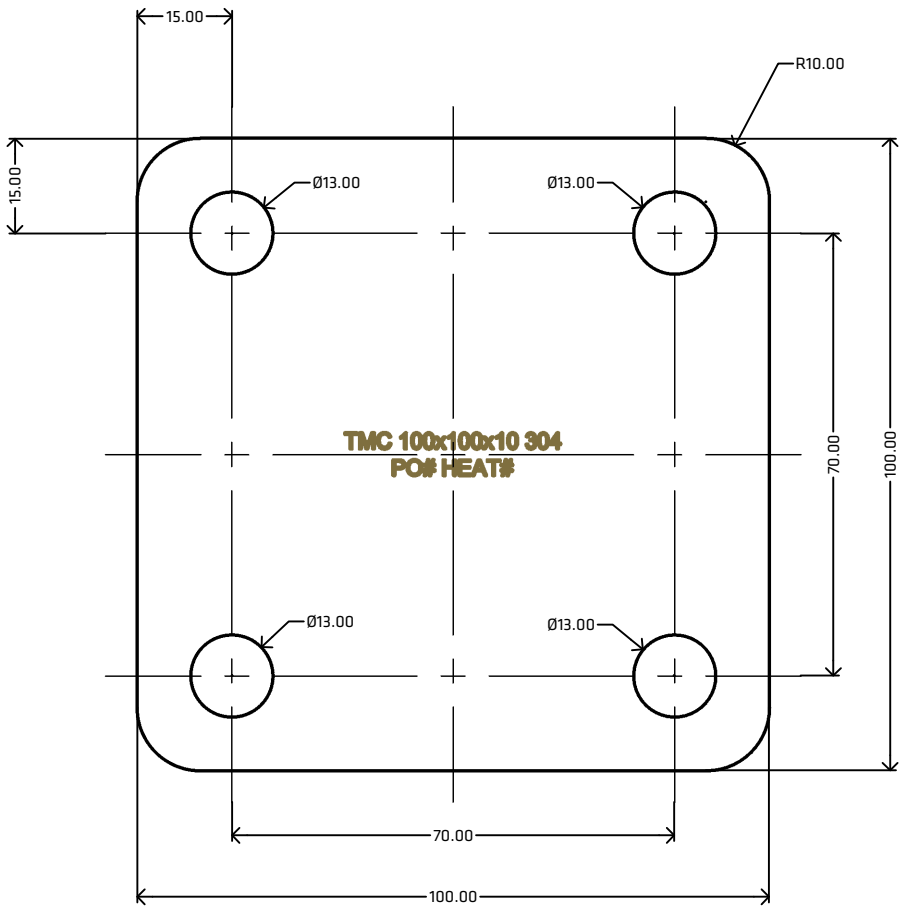
MATERIAL: STAINLESS STEEL  
GRADE: 304  
DIMENSIONAL STANDARD: TMC  
SURFACE FINISH: MILL/DULL  
MANUFACTURING PROCESS: LASER/WATER CUT FROM PLATE  
UDM: MILLIMETERS (mm)


SUPPLIER TO REMOVE AND/OR DEBUR ALL SHARP EDGES  
ERRORS AND OMISSIONS EXCEPTED

FEATURES

10.00MM THICK

[VIEW ONLINE](#)



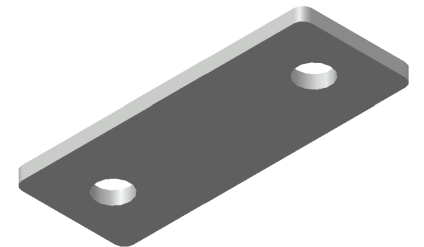
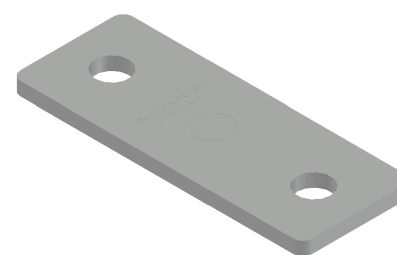
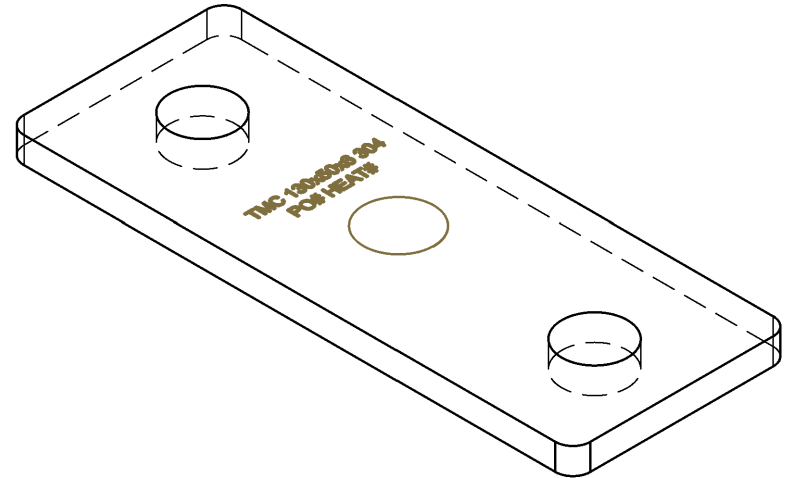
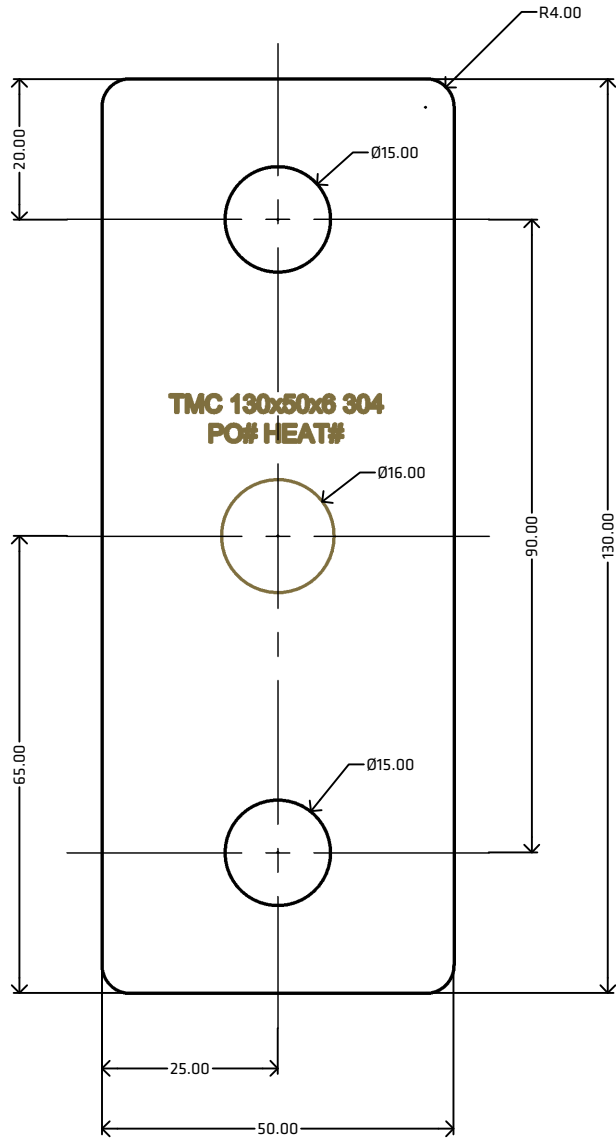
   THEMETALCOMPANY  TALK: 0508 304 316 VIEW: <a href="http://www.themetalcompany.co.nz">www.themetalcompany.co.nz</a> TYPE: <a href="mailto:sales@themetalcompany.co.nz">sales@themetalcompany.co.nz</a> VISIT: 149 Alabama Rd, Blenheim 7201, NZ	FILE	TMC - SFP10010010.DWG		CODE	SFP10010010	
	AUTHOR	CALEB G. - 31/07/23	STATUS	COMPLETE	SIZE	100x100x10
	CHECKED	BRENTLY F. - 31/07/23	SHEET	A4	DESC	FOOTPLATE
	REV	1.0	SCALE	NOT TO SCALE		


**NOTES**  
MATERIAL: STAINLESS STEEL  
GRADE: 304  
DIMENSIONAL STANDARD: TMC  
SURFACE FINISH: MILL/DULL  
MANUFACTURING PROCESS: LASER/WATER CUT FROM PLATE  
UDM: MILLIMETERS (mm)

SUPPLIER TO REMOVE AND/OR DEBUR ALL SHARP EDGES  
ERRORS AND OMISSIONS EXCEPTED

**FEATURES**  
16.00MM ETCHED CIRCLE IN THE CENTER OF THE FOOTPLATE FOR  
EASIER INSTALLATION OF A 16.00MM STUB  
6.00MM THICK

[VIEW ONLINE](#)



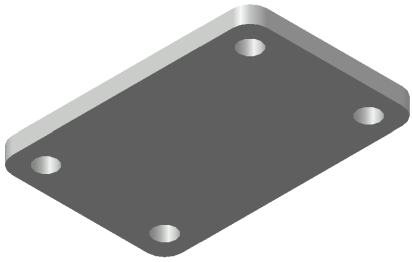
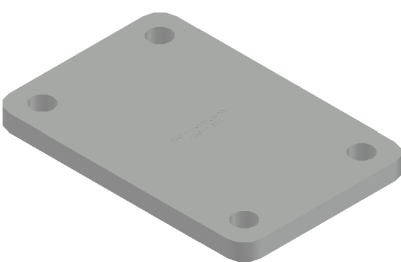
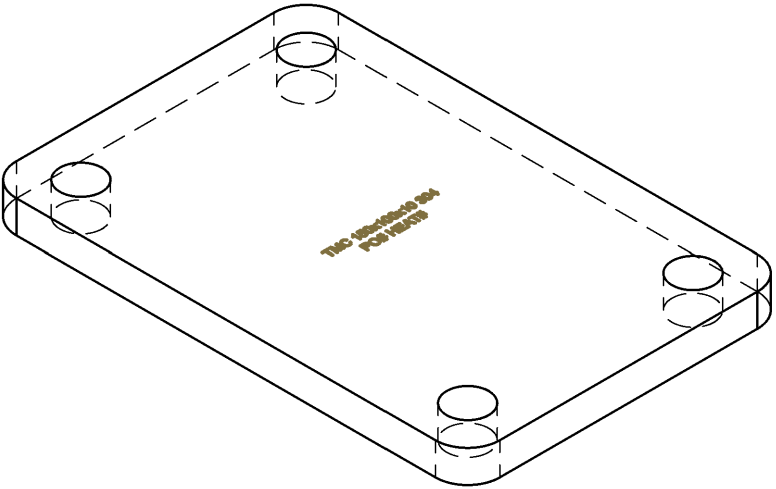
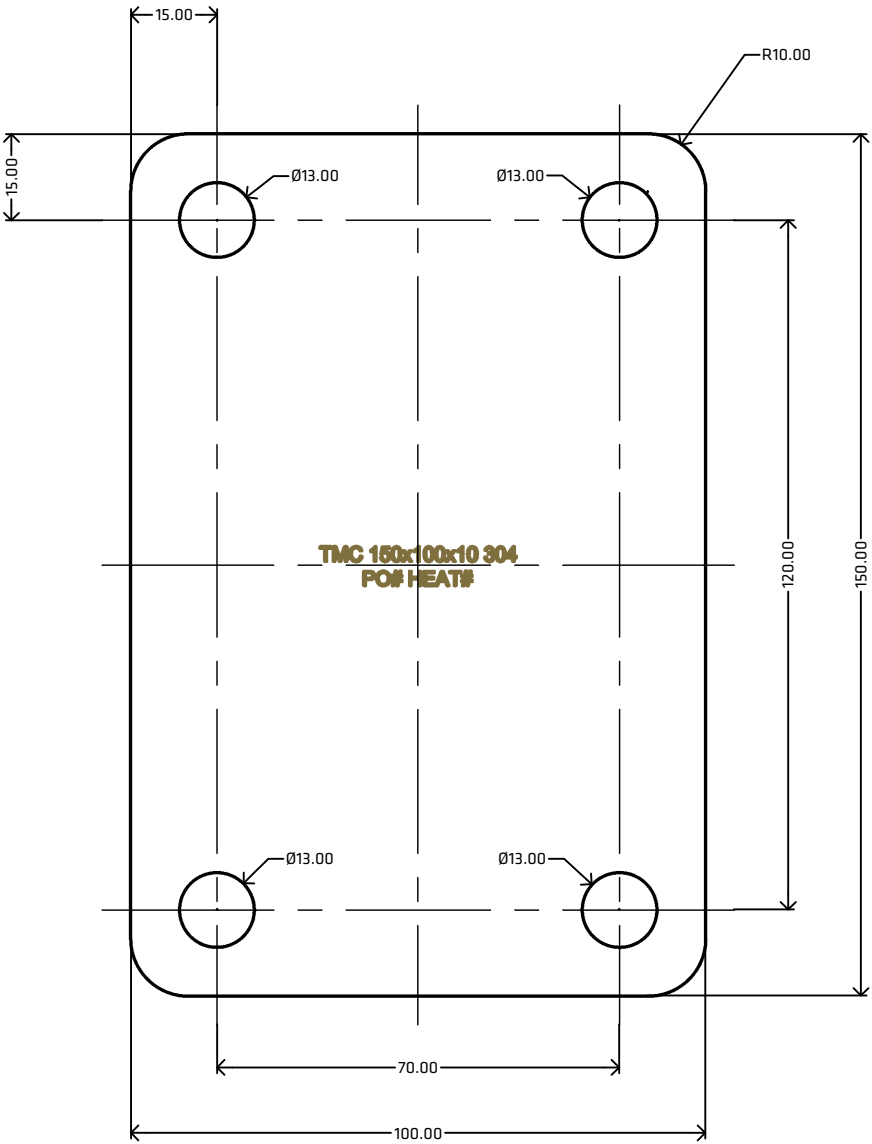
   THEMETALCOMPANY  TALK: 0508 304 316 VIEW: <a href="http://www.themetalcompany.co.nz">www.themetalcompany.co.nz</a> TYPE: <a href="mailto:sales@themetalcompany.co.nz">sales@themetalcompany.co.nz</a> VISIT: 149 Alabama Rd, Blenheim 7201, NZ	FILE	TMC - SFP130506.DWG		CODE	SFP130506	
	AUTHOR	CALEB G. - 28/07/23	STATUS	COMPLETE	SIZE	130x50x6
	CHECKED	BRENTLY F. - 31/07/23	SHEET	A4	DESC	FOOTPLATE
	REV	1.0	SCALE	NOT TO SCALE		


**NOTES**  
MATERIAL: STAINLESS STEEL  
GRADE: 304  
DIMENSIONAL STANDARD: TMC  
SURFACE FINISH: MILL/DULL  
MANUFACTURING PROCESS: LASER/WATER CUT FROM PLATE  
UDM: MILLIMETERS (mm)

SUPPLIER TO REMOVE AND/OR DEBUR ALL SHARP EDGES  
ERRORS AND OMISSIONS EXCEPTED

**FEATURES**  
10.00MM THICK

[VIEW ONLINE](#)



 THEMETALCOMPANY  TALK: 0508 304 316 VIEW: <a href="http://www.themetalcompany.co.nz">www.themetalcompany.co.nz</a> TYPE: <a href="mailto:sales@themetalcompany.co.nz">sales@themetalcompany.co.nz</a> VISIT: 149 Alabama Rd, Blenheim 7201, NZ	FILE	TMC - SFP15010010.DWG		CODE	SFP15010010	
	AUTHOR	CALEB G. - 31/07/23	STATUS	COMPLETE	SIZE	150x100x10
	CHECKED	BRENTLY F. - 31/07/23	SHEET	A4	DESC	FOOTPLATE
	REV	1.0	SCALE	NOT TO SCALE		

NOTES

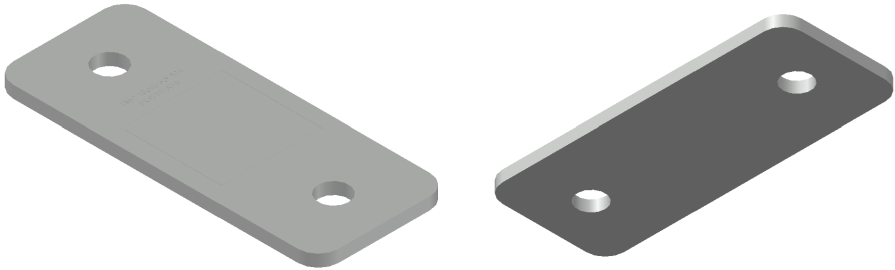
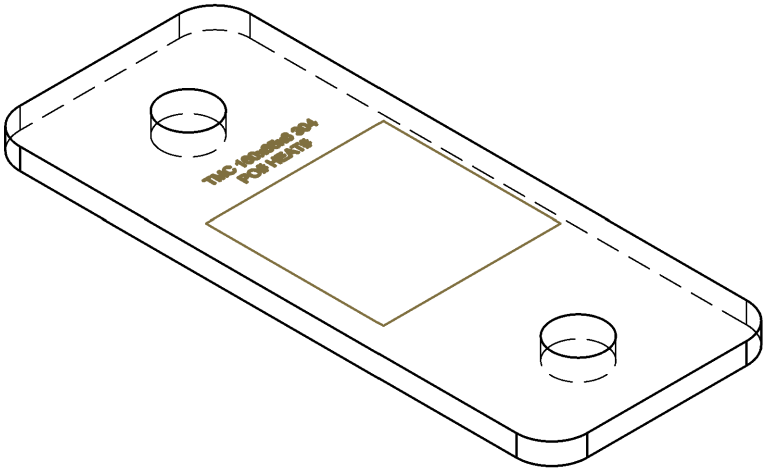
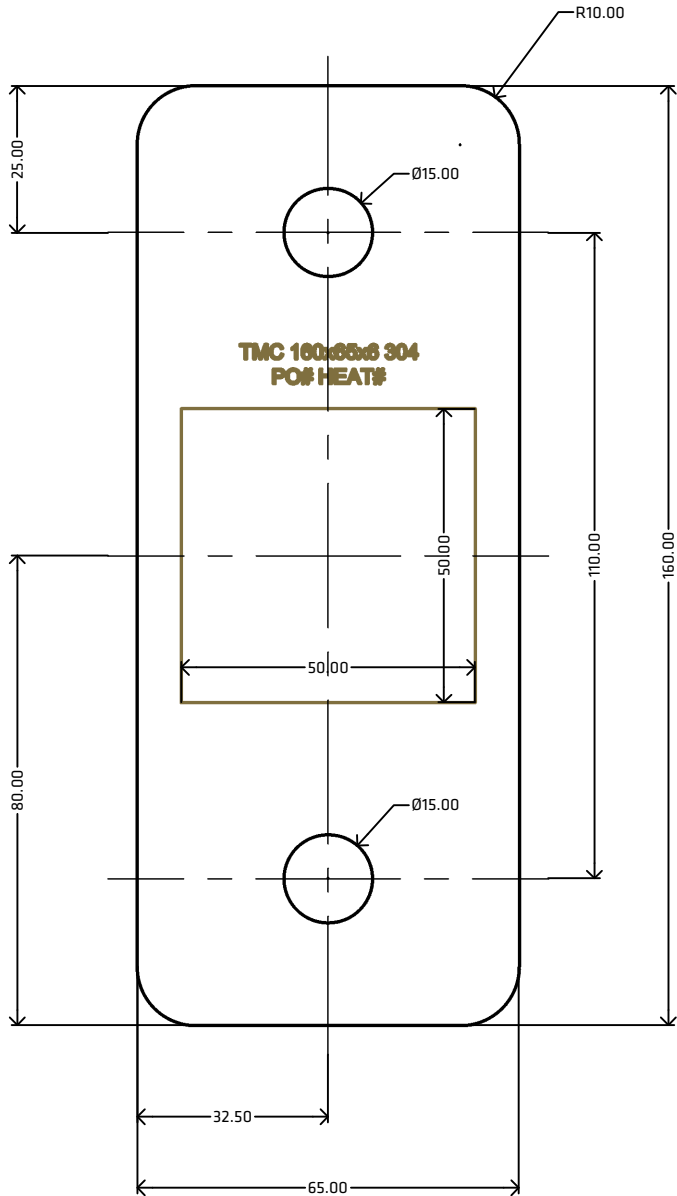
MATERIAL: STAINLESS STEEL  
GRADE: 304  
DIMENSIONAL STANDARD: TMC  
SURFACE FINISH: MILL/DULL  
MANUFACTURING PROCESS: LASER/WATER CUT FROM PLATE  
UDM: MILLIMETERS (mm)


SUPPLIER TO REMOVE AND/OR DEBUR ALL SHARP EDGES  
ERRORS AND OMISSIONS EXCEPTED

FEATURES

50.00x50.00MM ETCHED SQUARE IN THE CENTER OF THE FOOTPLATE FOR  
EASIER INSTALLATION OF 50.00x50.00MM BOX SECTION  
6.00MM THICK

[VIEW ONLINE](#)



 THEMETALCOMPANY  TALK: 0508 304 316 VIEW: <a href="http://www.themetalcompany.co.nz">www.themetalcompany.co.nz</a> TYPE: <a href="mailto:sales@themetalcompany.co.nz">sales@themetalcompany.co.nz</a> VISIT: 149 Alabama Rd, Blenheim 7201, NZ	FILE	TMC - SFP160656.DWG		CODE	SFP160656	
	AUTHOR	CALEB G. - 31/07/23	STATUS	COMPLETE	SIZE	160x65x6
	CHECKED	BRENTLY F. - 31/07/23	SHEET	A4	DESC	FOOTPLATE
	REV	1.0	SCALE	NOT TO SCALE		

NOTES

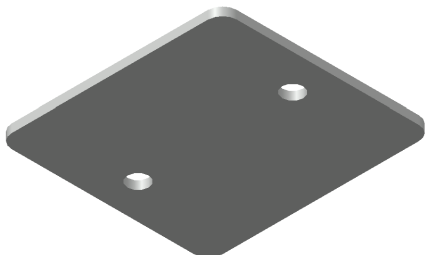
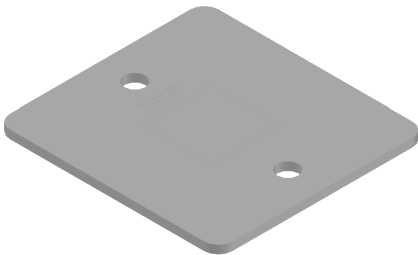
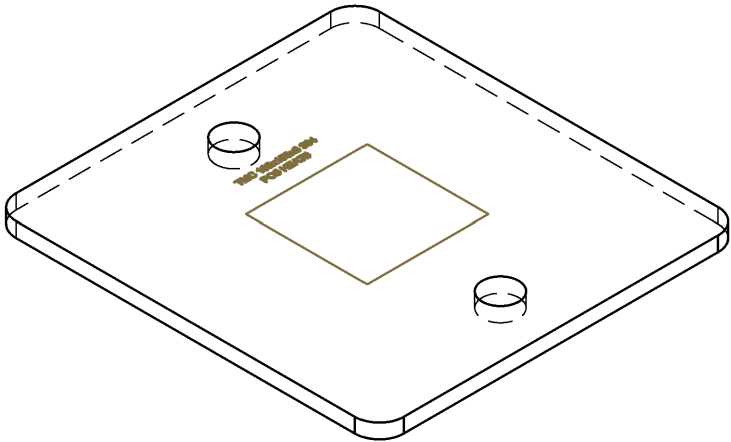
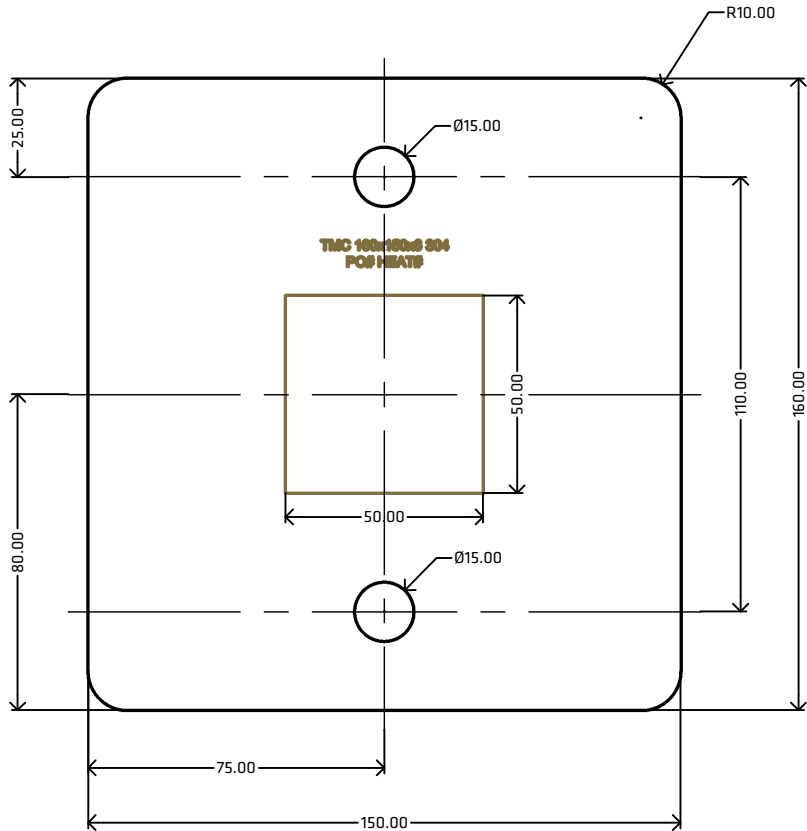
MATERIAL: STAINLESS STEEL  
GRADE: 304  
DIMENSIONAL STANDARD: TMC  
SURFACE FINISH: MILL/DULL  
MANUFACTURING PROCESS: LASER/WATER CUT FROM PLATE  
UDM: MILLIMETERS (mm)


SUPPLIER TO REMOVE AND/OR DEBUR ALL SHARP EDGES  
ERRORS AND OMISSIONS EXCEPTED

FEATURES

50.00x50.00MM ETCHED SQUARE IN THE CENTER OF THE FOOTPLATE FOR  
EASIER INSTALLATION OF 50.00x50.00MM BOX SECTION  
6.00MM THICK

[VIEW ONLINE](#)



 THEMETALCOMPANY  TALK: 0508 304 316 VIEW: <a href="http://www.themetalcompany.co.nz">www.themetalcompany.co.nz</a> TYPE: <a href="mailto:sales@themetalcompany.co.nz">sales@themetalcompany.co.nz</a> VISIT: 149 Alabama Rd, Blenheim 7201, NZ	FILE	TMC - SFP1601506.DWG		CODE	SFP1601506	
	AUTHOR	CALEB G. - 31/07/23		STATUS	COMPLETE	
	CHECKED	BRENTLY F. - 31/07/23		SHEET	A4	
	REV	1.0		SCALE	NOT TO SCALE	
				SIZE	160x150x6	
				DESC	FOOTPLATE	

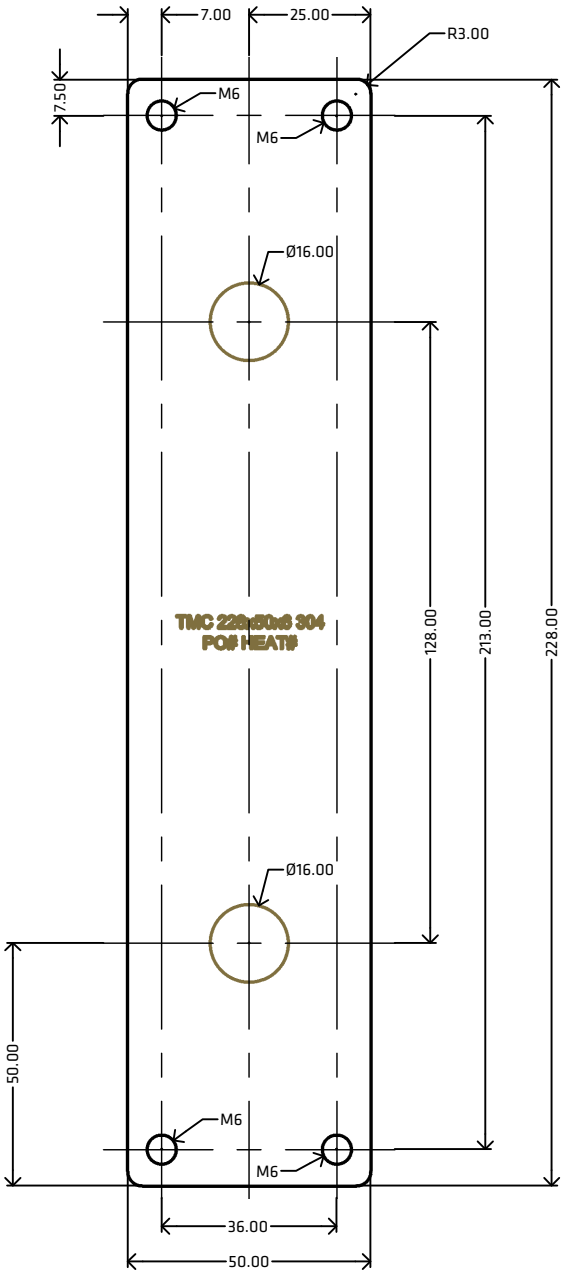
NOTES

MATERIAL: STAINLESS STEEL  
GRADE: 304  
DIMENSIONAL STANDARD: TMC  
SURFACE FINISH: MILL/DULL  
MANUFACTURING PROCESS: LASER/WATER CUT FROM PLATE  
UDM: MILLIMETERS (mm)

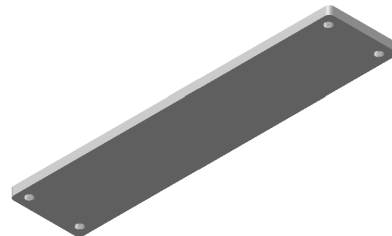
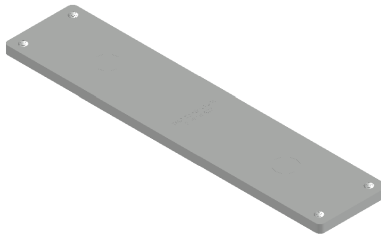
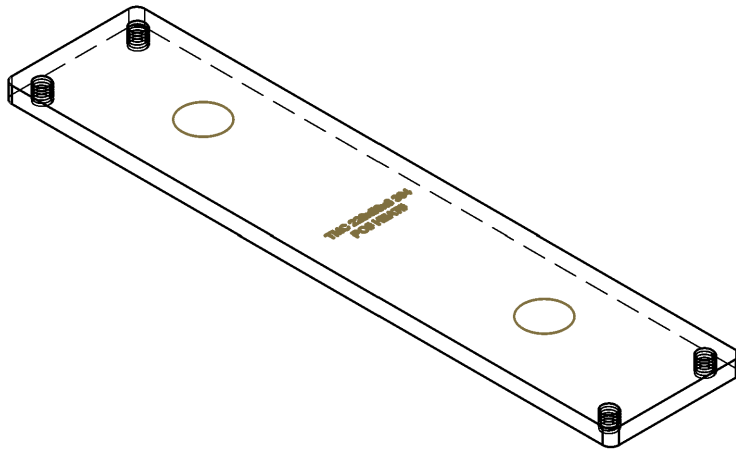
SUPPLIER TO REMOVE AND/OR DEBUR ALL SHARP EDGES  
ERRORS AND OMISSIONS EXCEPTED


FEATURES

TWO 16.00MM ETCHED CIRCLES FOR  
EASIER INSTALLATION OF 16.00MM STUBS  
M6 THREADED HOLES  
6.00MM THICK



[VIEW ONLINE](#)



 THEMETALCOMPANY  TALK: 0508 304 316 VIEW: <a href="http://www.themetalcompany.co.nz">www.themetalcompany.co.nz</a> TYPE: <a href="mailto:sales@themetalcompany.co.nz">sales@themetalcompany.co.nz</a> VISIT: 149 Alabama Rd, Blenheim 7201, NZ	FILE	TMC - SFP228506.DWG		CODE	SFP228506	
	AUTHOR	CALEB G. - 31/07/23	STATUS	COMPLETE	SIZE	228x50x6
	CHECKED	BRENTLY F. - 31/07/23	SHEET	A4	DESC	FOOTPLATE
	REV	1.0	SCALE	NOT TO SCALE		

NOTES

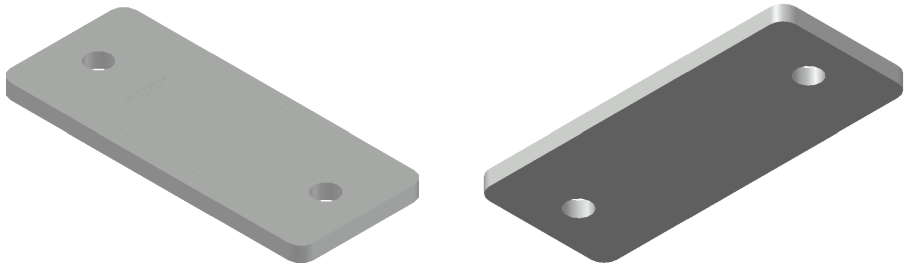
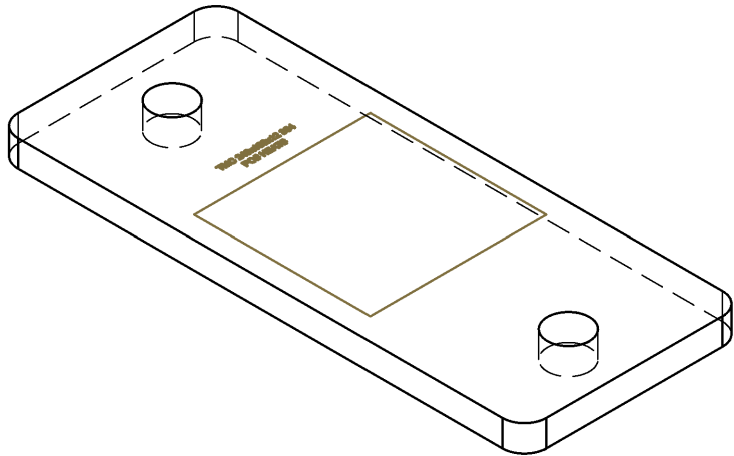
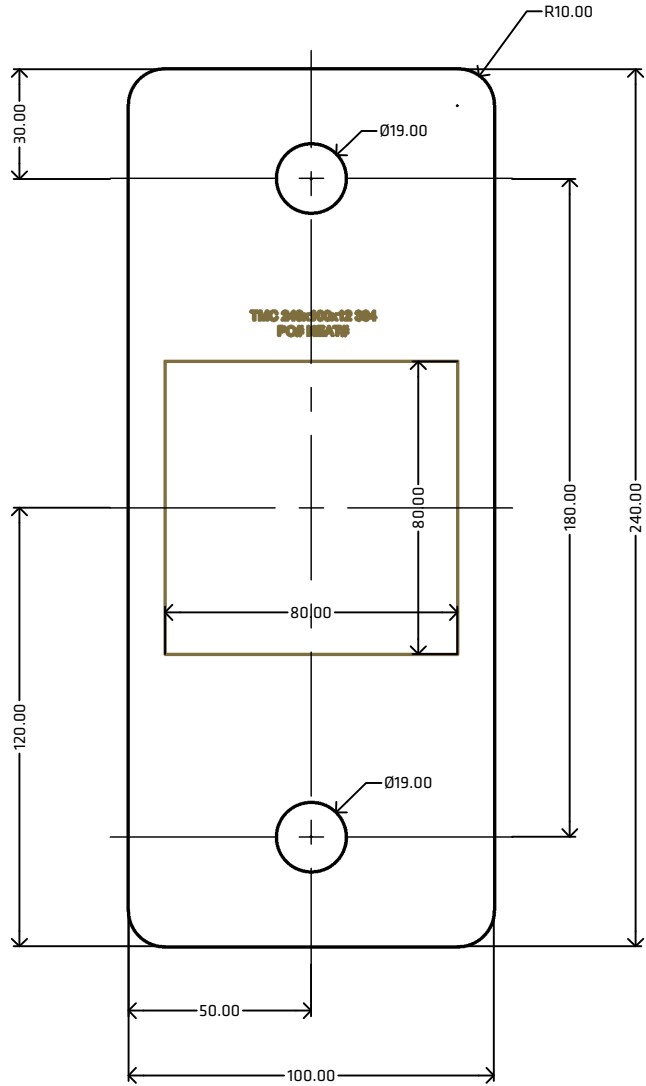
MATERIAL: STAINLESS STEEL  
GRADE: 304  
DIMENSIONAL STANDARD: TMC  
SURFACE FINISH: MILL/DULL  
MANUFACTURING PROCESS: LASER/WATER CUT FROM PLATE  
UDM: MILLIMETERS (mm)


SUPPLIER TO REMOVE AND/OR DEBUR ALL SHARP EDGES  
ERRORS AND OMISSIONS EXCEPTED

FEATURES

80.00x80.00MM ETCHED SQUARE IN THE CENTER OF THE FOOTPLATE FOR  
EASIER INSTALLATION OF 80.00x80.00MM BOX SECTION  
12.00MM THICK

[VIEW ONLINE](#)



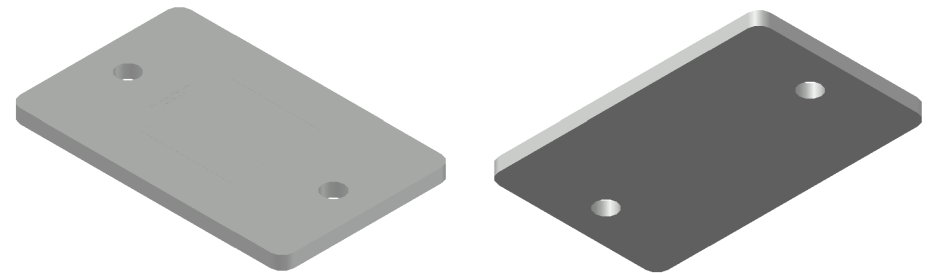
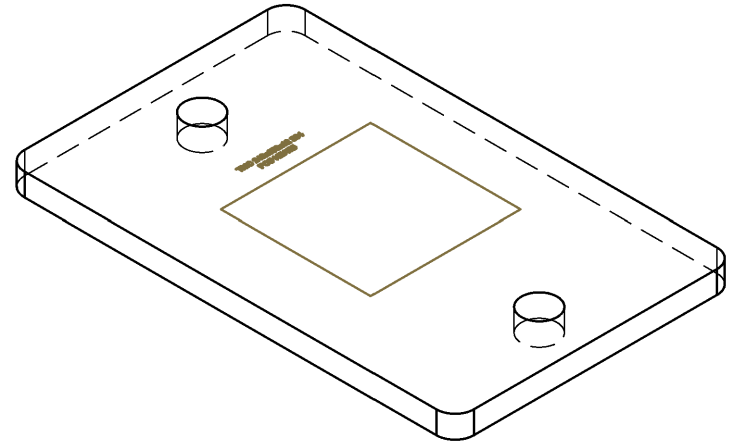
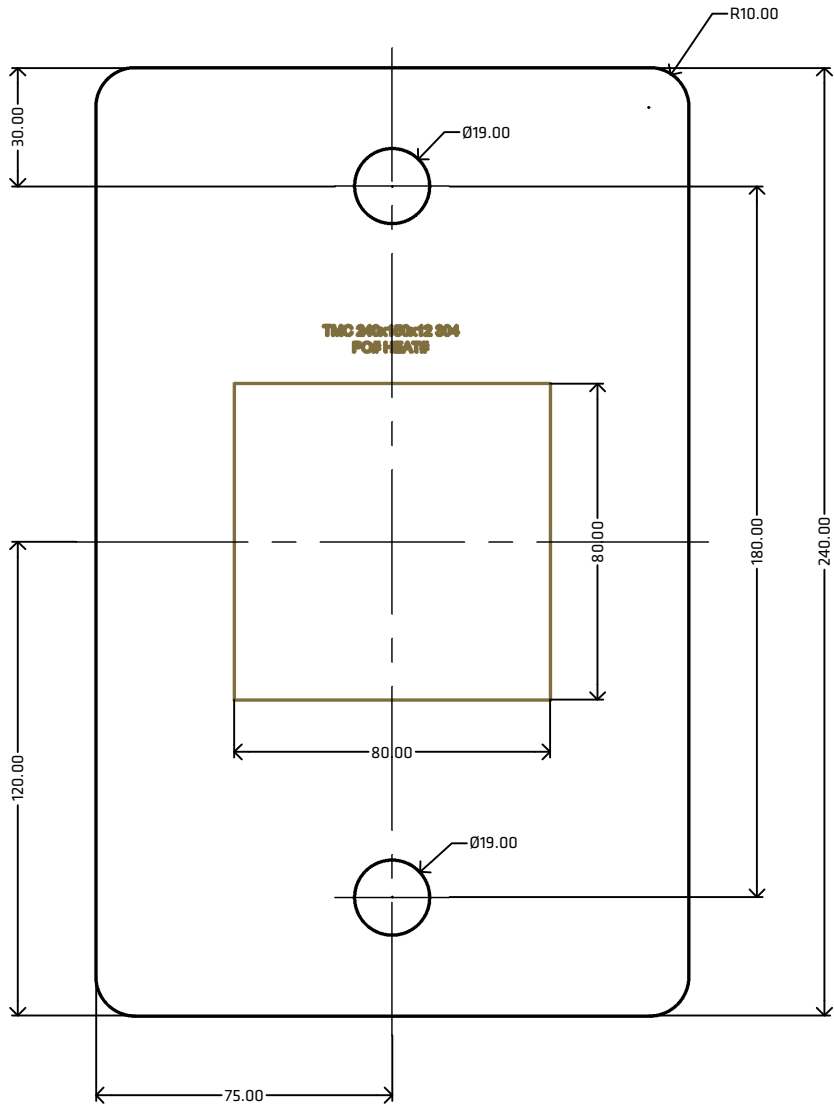
 THEMETALCOMPANY  TALK: 0508 304 316 VIEW: <a href="http://www.themetalcompany.co.nz">www.themetalcompany.co.nz</a> TYPE: <a href="mailto:sales@themetalcompany.co.nz">sales@themetalcompany.co.nz</a> VISIT: 149 Alabama Rd, Blenheim 7201, NZ	FILE	TMC - SFP24010012.DWG		CODE	SFP24010012	
	AUTHOR	CALEB G. - 31/07/23	STATUS	COMPLETE	SIZE	240x100x12
	CHECKED	BRENTLY F. - 31/07/23	SHEET	A4	DESC	FOOTPLATE
	REV	1.0	SCALE	NOT TO SCALE		


**NOTES**  
MATERIAL: STAINLESS STEEL  
GRADE: 304  
DIMENSIONAL STANDARD: TMC  
SURFACE FINISH: MILL/DULL  
MANUFACTURING PROCESS: LASER/WATER CUT FROM PLATE  
UDM: MILLIMETERS (mm)

SUPPLIER TO REMOVE AND/OR DEBUR ALL SHARP EDGES  
ERRORS AND OMISSIONS EXCEPTED

**FEATURES**  
80.00x80.00MM ETCHED SQUARE IN THE CENTER OF THE FOOTPLATE FOR  
EASIER INSTALLATION OF 80.00x80.00M BOX SECTION  
12.00MM THICK

[VIEW ONLINE](#)



   THEMETALCOMPANY  TALK: 0508 304 316 VIEW: <a href="http://www.themetalcompany.co.nz">www.themetalcompany.co.nz</a> TYPE: <a href="mailto:sales@themetalcompany.co.nz">sales@themetalcompany.co.nz</a> VISIT: 149 Alabama Rd, Blenheim 7201, NZ	FILE	TMC - SFP24015012.DWG		CODE	SFP24015012	
	AUTHOR	CALEB G. - 28/07/23	STATUS	COMPLETE	SIZE	240x150x12
	CHECKED	BRENTLY F. - 31/07/23	SHEET	A4	DESC	FOOTPLATE
	REV	1.0	SCALE	NOT TO SCALE		

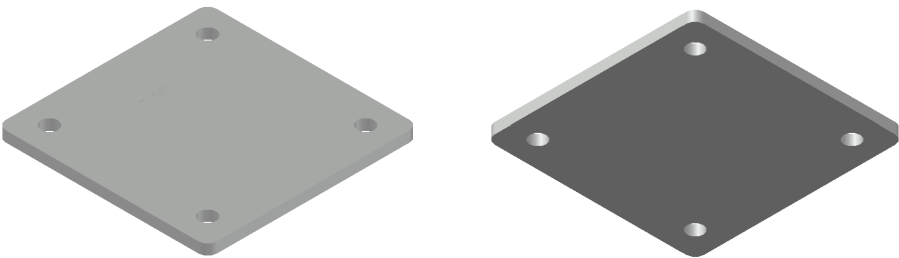
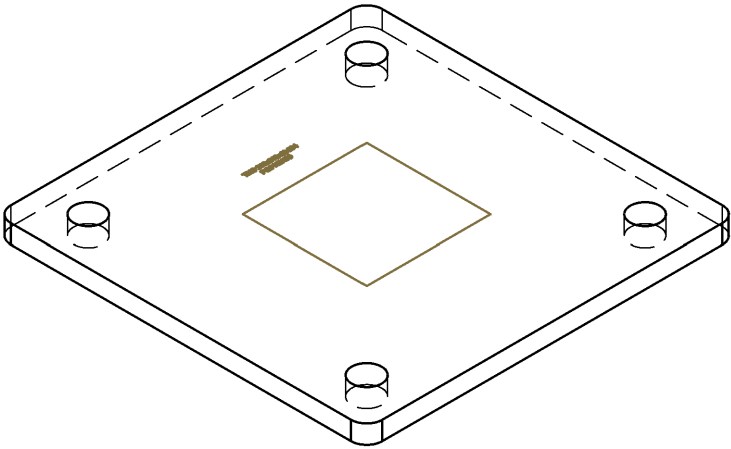
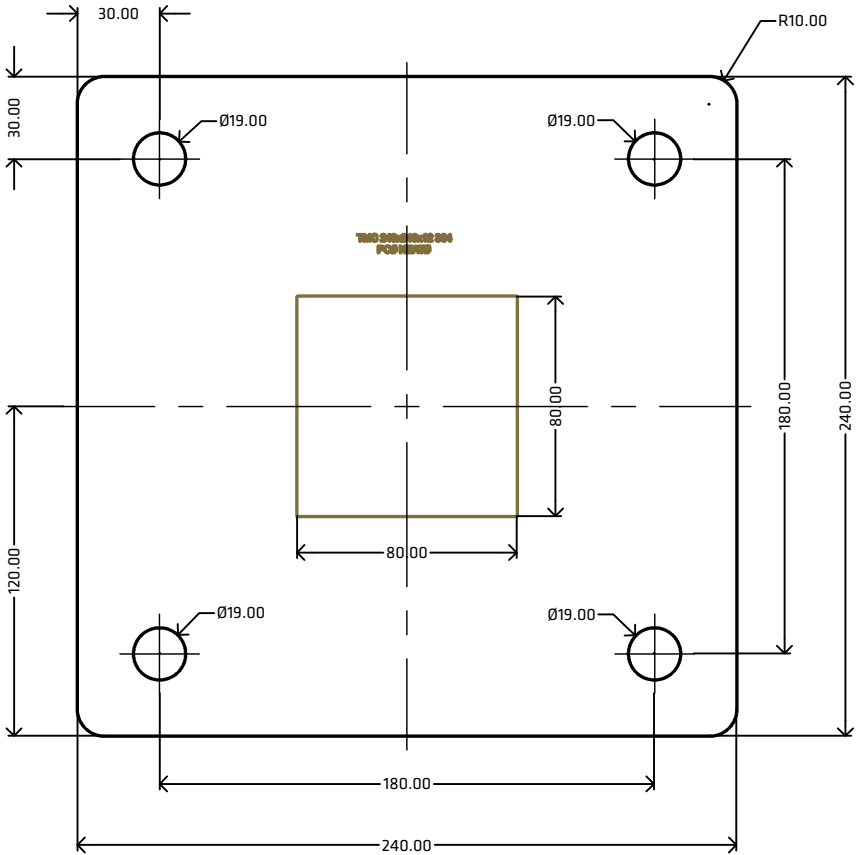



**NOTES**  
MATERIAL: STAINLESS STEEL  
GRADE: 304  
DIMENSIONAL STANDARD: TMC  
SURFACE FINISH: MILL/DULL  
MANUFACTURING PROCESS: LASER/WATER CUT FROM PLATE  
UDM: MILLIMETERS (mm)

SUPPLIER TO REMOVE AND/OR DEBUR ALL SHARP EDGES  
ERRORS AND OMISSIONS EXCEPTED

**FEATURES**  
80.00x80.00MM ETCHED SQUARE IN THE CENTER OF THE FOOTPLATE FOR  
EASIER INSTALLATION OF 80.00x80.00M BOX SECTION  
12.00MM THICK

[VIEW ONLINE](#)



 THEMETALCOMPANY  TALK: 0508 304 316 VIEW: <a href="http://www.themetalcompany.co.nz">www.themetalcompany.co.nz</a> TYPE: <a href="mailto:sales@themetalcompany.co.nz">sales@themetalcompany.co.nz</a> VISIT: 149 Alabama Rd, Blenheim 7201, NZ	FILE	TMC - SFP24024012.DWG		CODE	SFP24024012	
	AUTHOR	CALEB G. - 28/07/23	STATUS	COMPLETE	SIZE	240x240x12
	CHECKED	BRENTLY F. - 31/07/23	SHEET	A4	DESC	FOOTPLATE
	REV	1.0	SCALE	NOT TO SCALE		

NOTES

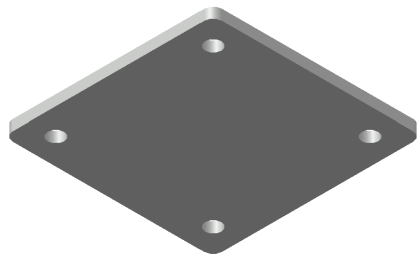
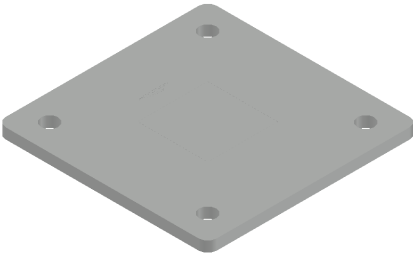
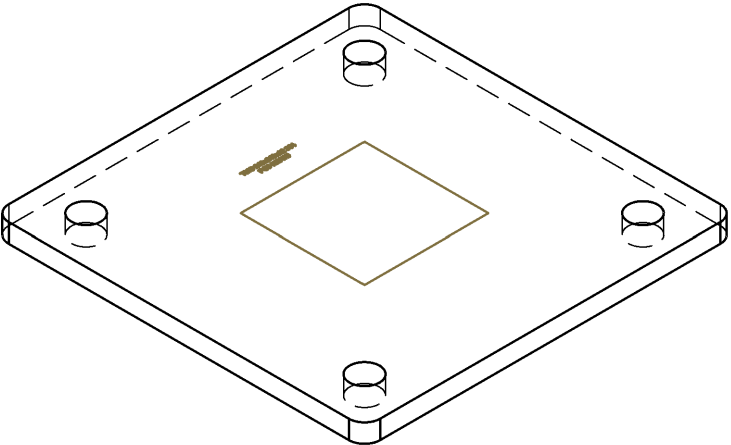
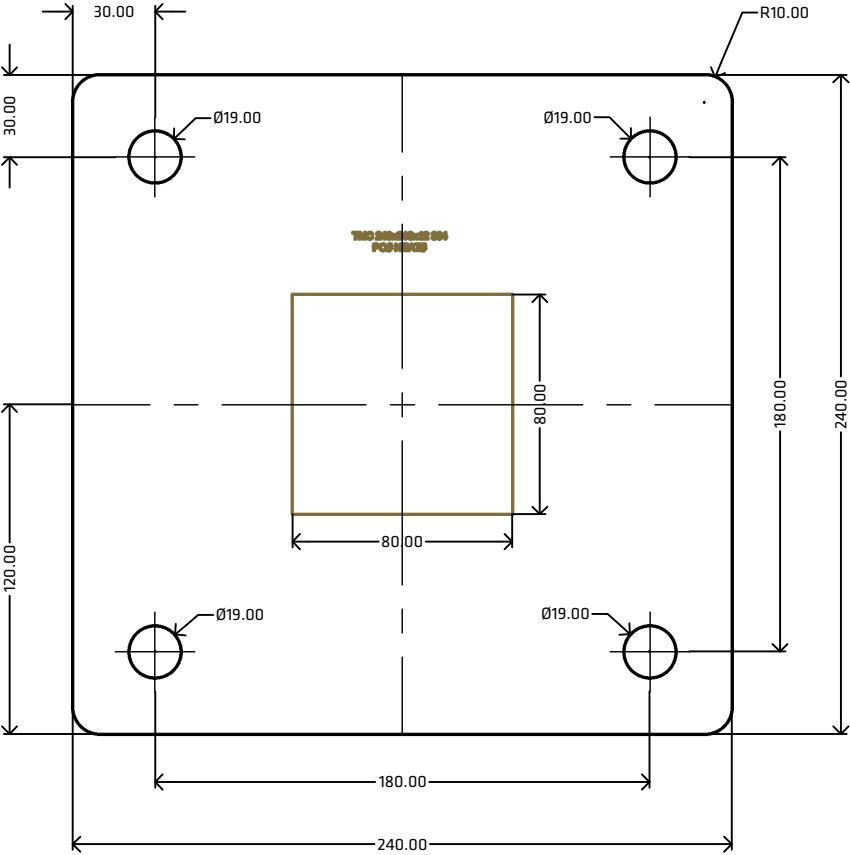
MATERIAL: STAINLESS STEEL  
GRADE: 304  
DIMENSIONAL STANDARD: TMC  
SURFACE FINISH: MILL/DULL  
MANUFACTURING PROCESS: LASER/WATER CUT FROM PLATE  
UDM: MILLIMETERS (mm)


SUPPLIER TO REMOVE AND/OR DEBUR ALL SHARP EDGES  
ERRORS AND OMISSIONS EXCEPTED

FEATURES

80.00x80.00MM ETCHED SQUARE IN THE CENTER OF THE FOOTPLATE FOR  
EASIER INSTALLATION OF 80.00x80.00MM BOX SECTION  
16.00MM THICK

[VIEW ONLINE](#)



 THE METAL COMPANY TALK: 0508 304 316 VIEW: <a href="http://www.themetalcompany.co.nz">www.themetalcompany.co.nz</a> TYPE: <a href="mailto:sales@themetalcompany.co.nz">sales@themetalcompany.co.nz</a> VISIT: 149 Alabama Rd, Blenheim 7201, NZ	FILE	TMC - SFP24024016.DWG		CODE	SFP24024016	
	AUTHOR	CALEB G. - 28/07/23	STATUS	COMPLETE	SIZE	240x240x16
	CHECKED	BRENTLY F. - 31/07/23	SHEET	A4	DESC	FOOTPLATE
	REV	1.0	SCALE	NOT TO SCALE		