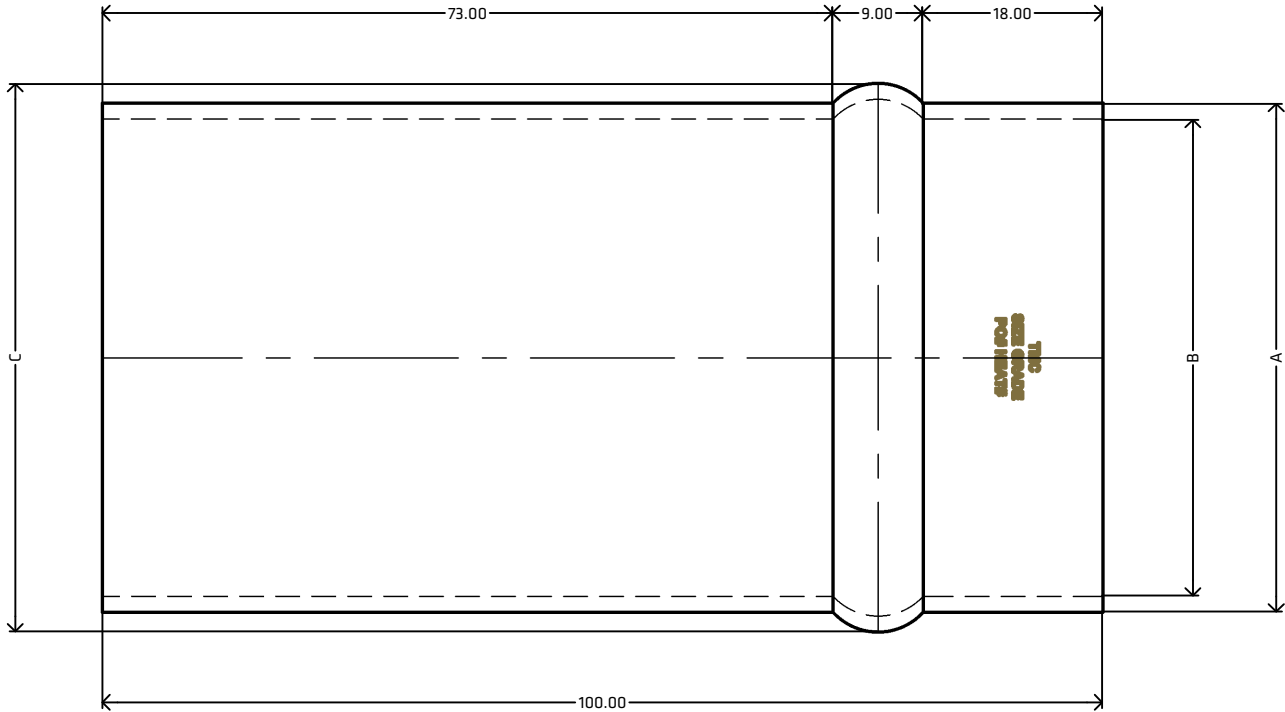


NOTES
MATERIAL: STAINLESS STEEL
GRADE: 304
DIMENSIONAL STANDARD: TMC
SURFACE FINISH: 320 Grit
MANUFACTURING PROCESS: FORMED FROM ROUND TUBE
UDM: MILLIMETERS (mm)

SUPPLIER TO REMOVE AND/OR DEBUR ALL SHARP EDGES
ERRORS AND OMISSIONS EXCEPTED

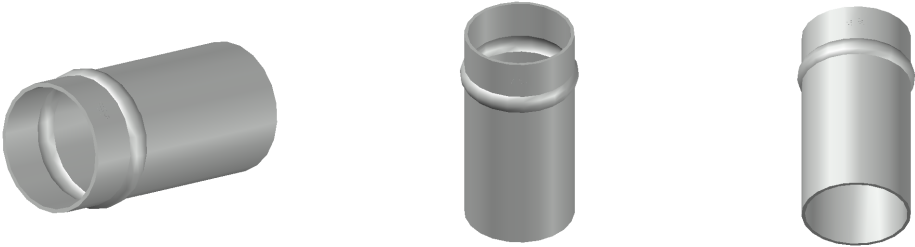
FEATURES
READY TO WELD STRAIGHT ONTO IMPERIAL SIZED TUBING
ASSISTS IN ATTACHING A FLEXIBLE HOSE WITH THE USE OF A HOSE CLAMP


[VIEW ONLINE](#)



MEASUREMENTS

CODE	SIZE	INCH	A	B	C
SSSH20	19.05	3/4"	19.05	15.85	23.05
SSSH25	25.4	1"	25.4	22.2	29.4
SSSH30	31.8	1 1/4"	31.8	28.6	35.8
SSSH40	38.1	1 1/2"	38.1	34.9	42.1
SSSH50	50.8	2"	50.8	47.6	54.8
SSSH65	63.5	2 1/2"	63.5	60.3	67.5
SSSH75	76.2	3"	76.2	73.0	80.2
SSSH100	101.6	4"	101.6	98.4	105.6



 THEMETALCOMPANY TALK: 0508 304 316 VIEW: www.themetalcompany.co.nz TYPE: sales@themetalcompany.co.nz VISIT: 149 Alabama Rd, Blenheim 7201, NZ	FILE	TMC - SSSH.DWG		CODE	SSSH	
	AUTHOR	CALEB G. - 31/07/23	STATUS	COMPLETE	SIZE	--
	CHECKED	BRENTLY F. - 31/07/23	SHEET	A4	DESC	SINGLE SWAGED HOSETAIL
	REV	1.0	SCALE	NOT TO SCALE		