

**NOTES**

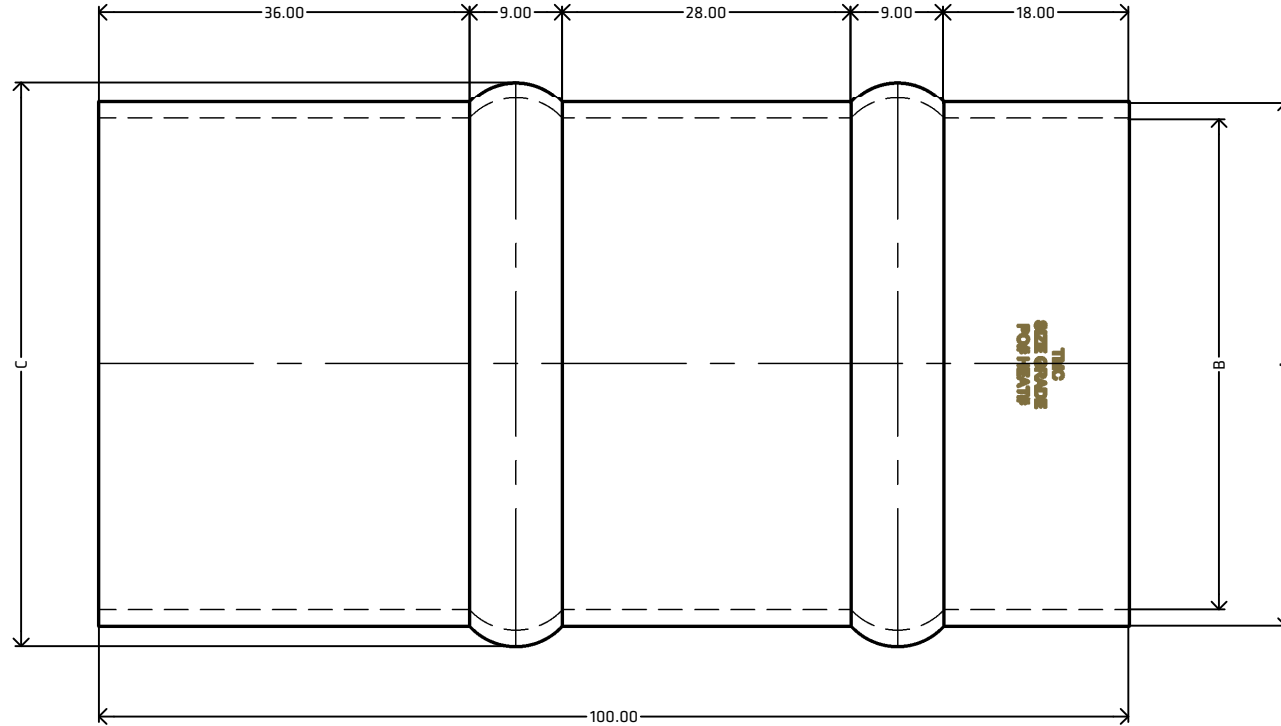
MATERIAL: STAINLESS STEEL  
 GRADE: 316  
 DIMENSIONAL STANDARD: TMC  
 SURFACE FINISH: 320 Grit  
 MANUFACTURING PROCESS: FORMED FROM ROUND TUBE  
 UDM: MILLIMETERS (mm)

SUPPLIER TO REMOVE AND/OR DEBUR ALL SHARP EDGES  
 ERRORS AND OMISSIONS EXCEPTED

**FEATURES**

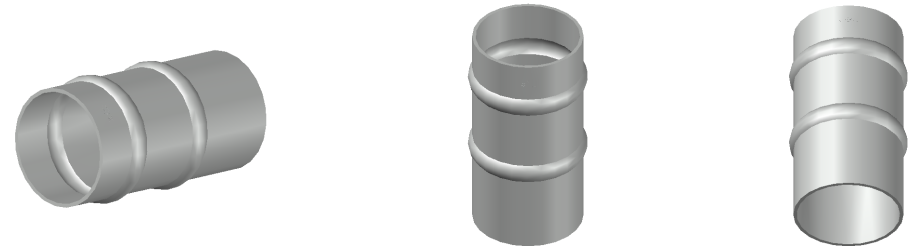
READY TO WELD STRAIGHT ONTO IMPERIAL SIZED TUBING  
 ASSISTS IN ATTACHING A FLEXIBLE HOSE WITH THE USE OF TWO HOSECLAMPS

[VIEW ONLINE](#)



**MEASUREMENTS**

CODE	SIZE	INCH	A	B	C
SDSH25	25.4	1"	25.4	22.2	29.4
SDSH40	38.1	1 1/2"	38.1	34.9	42.1
SDSH50	50.8	2"	50.8	47.6	54.8
SDSH75	76.2	3"	76.2	73.0	80.2
SDSH100	101.6	4"	101.6	98.4	105.6
SDSH150	152.4	6"	152.4	149.2	156.4



THE METAL COMPANY TALK: 0508 304 316 VIEW: www.themetalcompany.co.nz TYPE: sales@themetalcompany.co.nz VISIT: 149 Alabama Rd, Blenheim 7201, NZ	FILE	TMC - SDSH.DWG		CODE	SDSH	
	AUTHOR	CALEB G. - 31/07/23	STATUS	COMPLETE	SIZE	--
	CHECKED	BRENTLY F. - 31/07/23	SHEET	A4	DESC	DOUBLE SWAGED HOSETAIL
	REV	1.0	SCALE	NOT TO SCALE		