

NOTES

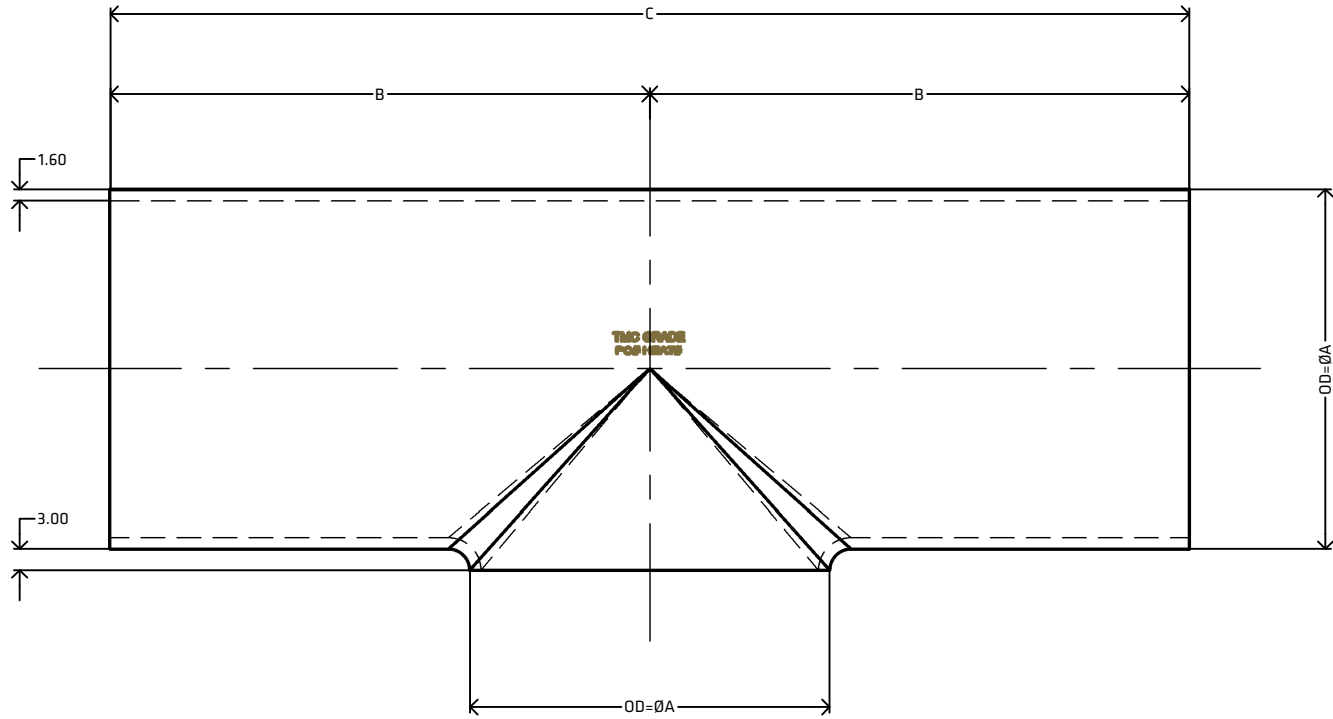
MATERIAL: STAINLESS STEEL
 GRADE: 316L
 DIMENSIONAL STANDARD: AS1528.3 : 2001
 SURFACE FINISH: EXTERNAL=320 GRIT, INTERNAL=ROUGHNESS NOT EXCEEDING 1.0µm Ra
 MANUFACTURING PROCESS: MADE FROM MATERIAL CONFORMING WITH ASTM A240M OR ASTM A269
 UOM: MILLIMETERS (mm)

SUPPLIER TO REMOVE AND/OR DEBUR ALL SHARP EDGES
 ERRORS AND OMISSIONS EXCEPTED

FEATURES

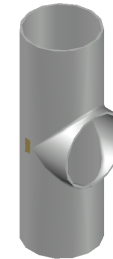
TO SUIT IMPERIAL SIZED TUBE
 LENGTH TOLERANCE = +0.50MM -0.00MM
 PERPENDICULARITY TOLERANCE = ASME B16.9
 *PLEASE NOTE THAT STPT200 DOES NOT MEET AS1528.3

[VIEW ONLINE](#)



MEASUREMENTS

CODE	SIZE	INCH	ØA	B	C
STPT20	19.05	3/4"	19.05±0.09	28.6	57.2
STPT25	25.4	1"	25.4±0.12	38.1	76.2
STPT30	31.8	1 1/4"	31.8±0.15	47.7	95.4
STPT40	38.1	1 1/2"	38.1±0.19	57.0	114.0
STPT50	50.8	2"	50.8±0.25	76.2	152.4
STPT65	63.5	2 1/2"	63.5±0.31	95.0	190.0
STPT75	76.2	3"	76.2±0.38	114.2	228.4
STPT100	101.6	4"	101.6±0.5	152.4	304.8
STPT125	127.0	5"	127.0±0.63	190.5	381.0
STPT150	152.4	6"	152.4±0.76	228.5	457.0
STPT200*	203.2	8"	203.2±1.01	304.8	395.0



<p>THE METAL COMPANY TALK: 0508 304 316 VIEW: www.themetalcompany.co.nz TYPE: sales@themetalcompany.co.nz VISIT: 149 Alabama Rd, Blenheim 7201, NZ</p>	FILE	TMC-STPT-SPEC-SHEET.DWG		CODE	STPT	
	AUTHOR	CALEB G. - 14/08/23	STATUS	COMPLETE	SIZE	--
	CHECKED	BRENTLY F. - 16/08/23	SHEET	A4	DESC	TUBE PULLED TEE AS1528.3
	REV	1.0	SCALE	NOT TO SCALE		