

**NOTES**

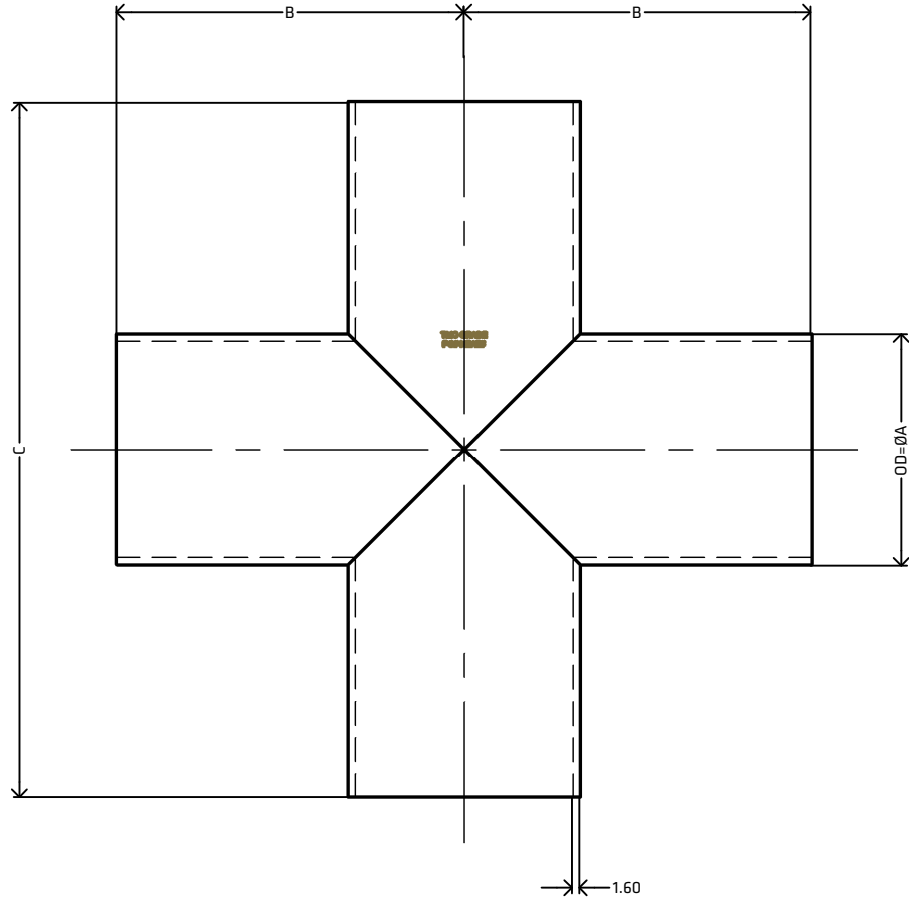
MATERIAL: STAINLESS STEEL  
 GRADE: 316L  
 DIMENSIONAL STANDARD: AS1528.3 : 2001  
 SURFACE FINISH: EXTERNAL=320 GRIT, INTERNAL=ROUGHNESS NOT EXCEEDING 1.0µm Ra  
 MANUFACTURING PROCESS: MADE FROM MATERIAL CONFORMING WITH ASTM A240M OR ASTM A269  
 UDM: MILLIMETERS (mm)

SUPPLIER TO REMOVE AND/OR DEBUR ALL SHARP EDGES  
 ERRORS AND OMISSIONS EXCEPTED

**FEATURES**

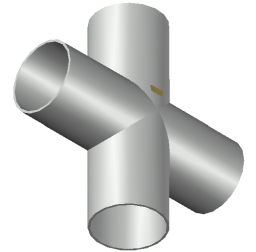
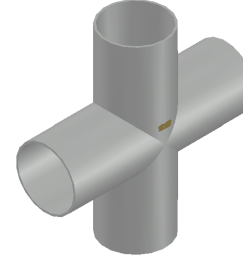
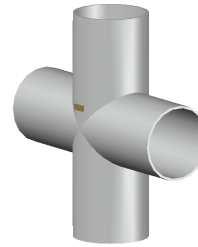
TO SUIT IMPERIAL SIZED TUBE  
 LENGTH TOLERANCE = +0.50MM -0.00MM  
 PERPENDICULARITY TOLERANCE = ASME B16.9

[VIEW ONLINE](#)



**MEASUREMENTS**

CODE	SIZE	INCH	ØA	B	C
STEC25	25.4	1"	25.4±0.12	38.1	76.2
STEC30	31.8	1 1/4"	31.8±0.15	47.7	95.4
STEC40	38.1	1 1/2"	38.1±0.19	57.0	114.0
STEC50	50.8	2"	50.8±0.25	76.2	152.4
STEC65	63.5	2 1/2"	63.5±0.31	95.0	190.0
STEC75	76.2	3"	76.2±0.38	114.2	228.4
STEC100	101.6	4"	101.6±0.5	152.4	304.8



<p>THE METAL COMPANY                  TALK: 0508 304 316                  VIEW: <a href="http://www.themetalcompany.co.nz">www.themetalcompany.co.nz</a>                  TYPE: <a href="mailto:sales@themetalcompany.co.nz">sales@themetalcompany.co.nz</a>                  VISIT: 149 Alabama Rd, Blenheim 7201, NZ</p>	FILE	TMC-STEC-SPEC-SHEET.DWG		CODE	STEC	
	AUTHOR	CALEB G. - 14/08/23	STATUS	COMPLETE	SIZE	--
	CHECKED	BRENTLY F. - 16/08/23	SHEET	A4	DESC	TUBE EQUAL CROSS AS1528.3
	REV	1.0	SCALE	NOT TO SCALE		