

**NOTES**

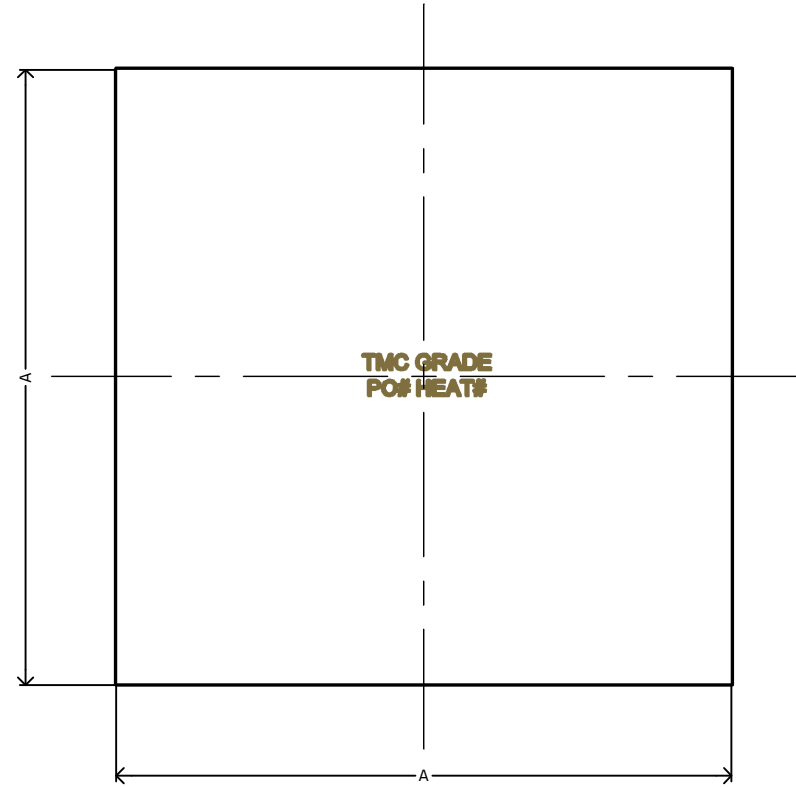
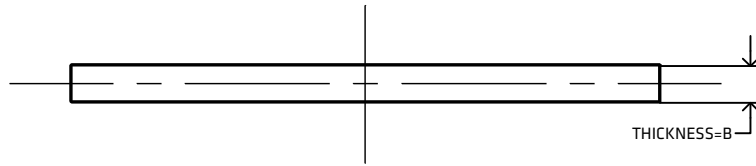
MATERIAL: STAINLESS STEEL  
 GRADE: 316  
 DIMENSIONAL STANDARD: TMC  
 SURFACE FINISH: 2B  
 MANUFACTURING PROCESS: LASER/WATER CUT FROM SHEET  
 UOM: MILLIMETERS (mm)

SUPPLIER TO REMOVE AND/OR DEBUR ALL SHARP EDGES  
 ERRORS AND OMISSIONS EXCEPTED

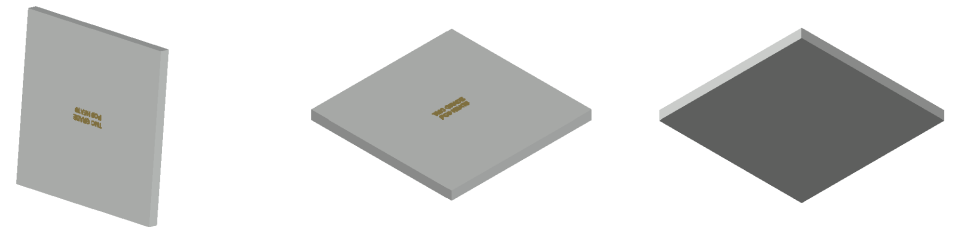
**FEATURES**

TO SUIT SQUARE TUBE (BOX SECTION)  
 FOR BLANKING THE END OF SQUARE TUBING  
 OUTSIDE MEASUREMENT OF THE CAP IS SQUARE TUBE MINUS,  
 ONE WALL THICKNESS FOR EASE OF WELDING

[VIEW ONLINE](#)



MEASUREMENTS			
CODE	SIZE	A	B
SSTFC20	19.05x19.05	17.0	2.0
SSTFC25	25x25	23.0	2.0
SSTFC30	31.8x31.8	29.0	2.0
SSTFC40	40x40	38.0	2.0
SSTFC50	50x50	48.0	3.0
SSTFC75	75x75	72.0	3.0
SSTFC80	80x80	77.0	3.0
SSTFC100	100x100	97.0	3.0



<b>THE METAL COMPANY</b> TALK: 0508 304 316 VIEW: <a href="http://www.themetalcompany.co.nz">www.themetalcompany.co.nz</a> TYPE: <a href="mailto:sales@themetalcompany.co.nz">sales@themetalcompany.co.nz</a> VISIT: 149 Alabama Rd, Blenheim 7201, NZ	FILE	TMC-SSTFC-SPEC-SHEET.DWG		CODE	SSTFC	
	AUTHOR	CALEB G. - 15/08/23	STATUS	COMPLETE	SIZE	--
	CHECKED	BRENTLY F. - 16/08/23	SHEET	A4	DESC	SQUARE TUBE FLAT CAP
	REV	1.0	SCALE	NOT TO SCALE		