

**NOTES**

MATERIAL: STAINLESS STEEL  
 GRADE: 316L  
 DIMENSIONAL STANDARD: AS1528.3 : 2001  
 SURFACE FINISH: EXTERNAL=320 GRIT, INTERNAL=ROUGHNESS NOT EXCEEDING 1.0µm Ra  
 MANUFACTURING PROCESS: MADE FROM MATERIAL CONFORMING WITH ASTM A240M OR ASTM A269  
 UOM: MILLIMETERS (mm)

SUPPLIER TO REMOVE AND/OR DEBUR ALL SHARP EDGES  
 ERRORS AND OMISSIONS EXCEPTED

**FEATURES**

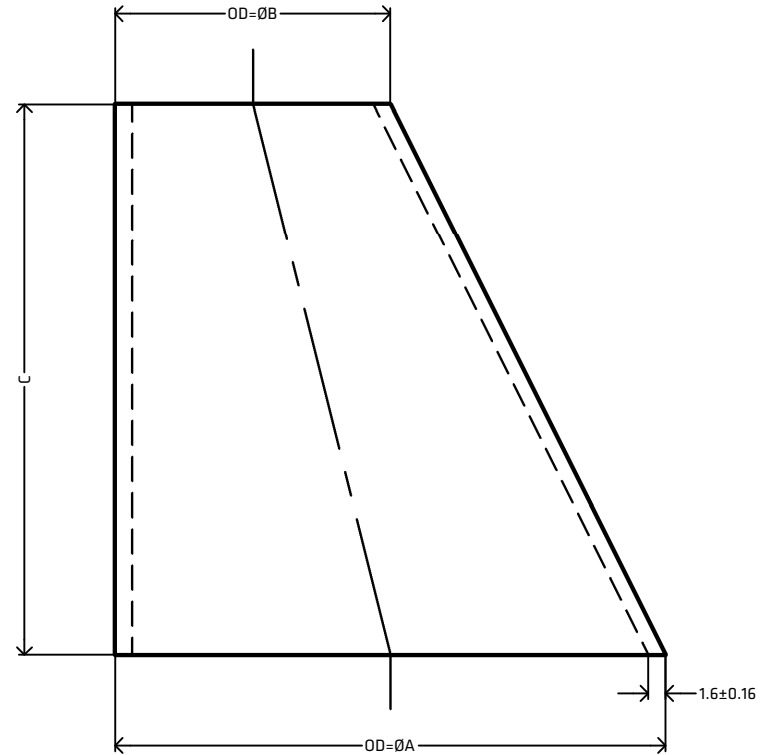
TO SUIT IMPERIAL SIZED TUBE  
 LENGTH TOLERANCE = +0.50MM -0.00MM  
 PERPENDICULARITY TOLERANCE = ASME B16.9  
 MORE SIZES AVAILABLE ON REQUEST

[VIEW ONLINE](#)



**MEASUREMENTS**

CODE	SIZE	INCH	ØA	ØB	C
STER2520	25.4x19.05	1"x3/4"	25.4±0.12	19.05±0.09	25.4
STER3025	31.8x25.4	1 1/4"x1"	31.8±0.15	25.4±0.12	31.8
STER4020	38.1x19.05	1 1/2"x3/4"	38.1±0.19	19.05±0.09	38.1
STER4025	38.1x25.4	1 1/2"x1"	38.1±0.19	25.4±0.12	38.1
STER4030	38.1x31.8	1 1/2"x1 1/4"	38.1±0.19	31.8±0.15	38.1
STER5025	50.8x25.4	2"x1"	50.8±0.25	25.4±0.12	50.8
STER5030	50.8x31.8	2"x1 1/4"	50.8±0.25	31.8±0.15	50.8
STER5040	50.8x38.1	2"x1 1/2"	50.8±0.25	38.1±0.19	50.8
STER6525	63.5x25.4	2 1/2"x1"	63.5±0.31	25.4±0.12	63.5
STER6530	63.5x31.8	2 1/2"x1 1/4"	63.5±0.31	31.8±0.15	63.5
STER6540	63.5x38.1	2 1/2"x1 1/2"	63.5±0.31	38.1±0.19	63.5
STER6550	63.5x50.8	2 1/2"x2"	63.5±0.31	50.8±0.25	63.5
STER7525	76.2x25.4	3"x1"	76.2±0.38	25.4±0.12	76.2
STER7540	76.2x38.1	3"x1 1/2"	76.2±0.38	38.1±0.19	76.2
STER7550	76.2x50.8	3"x2"	76.2±0.38	50.8±0.25	76.2
STER7565	76.2x63.5	3"x2 1/2"	76.2±0.38	63.5±0.31	76.2
STER10040	101.6x38.1	4"x1 1/2"	101.6±0.5	38.1±0.19	101.6
STER10050	101.6x50.8	4"x2"	101.6±0.5	50.8±0.25	101.6
STER10065	101.6x63.5	4"x2 1/2"	101.6±0.5	63.5±0.31	101.6
STER10075	101.6x76.2	4"x3"	101.6±0.5	76.2±0.38	101.6
STER125100	127.0x101.6	5"x4"	127.0±0.63	101.6±0.5	127.0
STER15050	152.4x50.8	6"x2"	152.4±0.76	50.8±0.25	152.4
STER15075	152.4x76.2	6"x3"	152.4±0.76	76.2±0.38	152.4
STER150100	152.4x101.6	6"x4"	152.4±0.76	101.6±0.5	152.4
STER150125	152.4x127.0	6"x5"	152.4±0.76	127.0±0.63	152.4



<p><b>THE METAL COMPANY</b>                  TALK: 0508 304 316                  VIEW: <a href="http://www.themetalcompany.co.nz">www.themetalcompany.co.nz</a>                  TYPE: <a href="mailto:sales@themetalcompany.co.nz">sales@themetalcompany.co.nz</a>                  VISIT: 149 Alabama Rd, Blenheim 7201, NZ</p>	FILE	TMC-STER-SPEC-SHEET.DWG		CODE	STER	
	AUTHOR	CALEB G. - 14/08/23	STATUS	COMPLETE	SIZE	--
	CHECKED	BRENTLY F. - 16/08/23	SHEET	A4	DESC	TUBE ECCENTRIC REDUCER AS1528.3
	REV	1.0	SCALE	NOT TO SCALE		