

NOTES

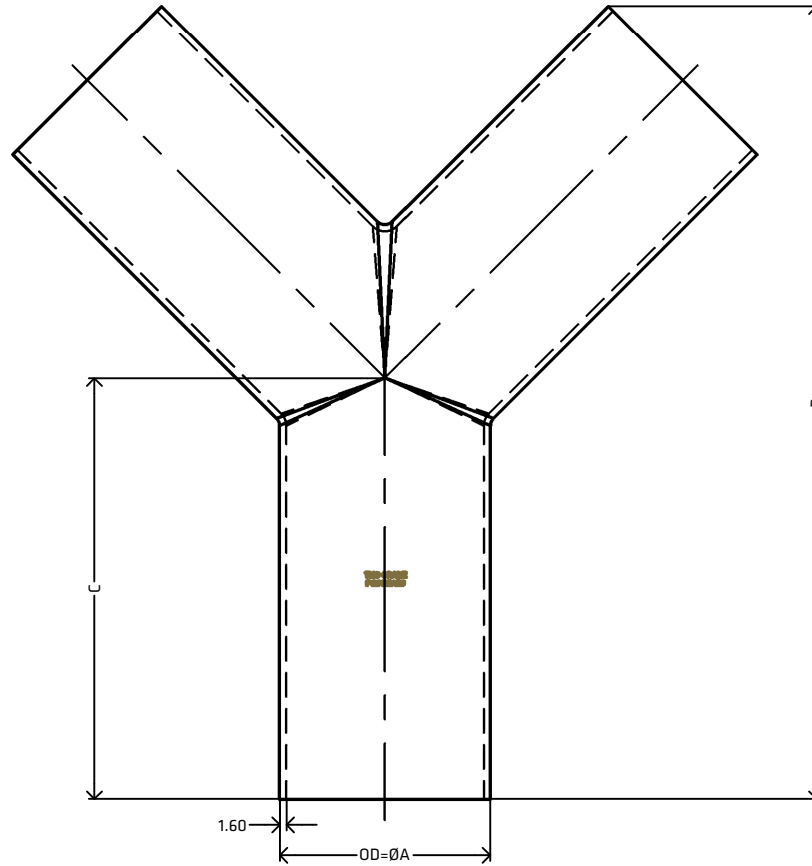
MATERIAL: STAINLESS STEEL
 GRADE: 316L
 DIMENSIONAL STANDARD: 3A
 SURFACE FINISH: EXTERNAL=320 GRIT, INTERNAL=ROUGHNESS NOT EXCEEDING 1.0µm Ra
 MANUFACTURING PROCESS: --
 UDM: MILLIMETERS (mm)

SUPPLIER TO REMOVE AND/OR DEBUR ALL SHARP EDGES
 ERRORS AND OMISSIONS EXCEPTED

FEATURES

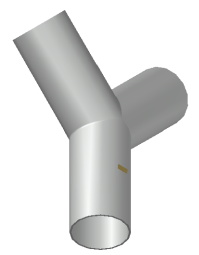
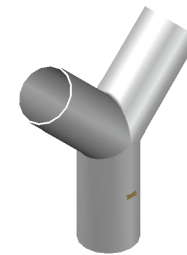
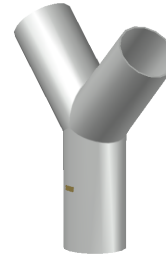
TO SUIT IMPERIAL SIZED TUBE
 TWO 45.00° BRANCHES FORMING A 'Y' SHAPE

[VIEW ONLINE](#)



MEASUREMENTS

CODE	SIZE	INCH	ØA	B	C
STEY25	25.4	1"	25.4	139.1	76.2
STEY30	31.8	1 1/4"	31.8	141.3	76.2
STEY40	38.1	1 1/2"	38.1	143.6	76.2
STEY50	50.8	2"	50.8	191.4	101.6
STEY65	63.5	2 1/2"	63.5	239.3	127.0
STEY75	76.2	3"	76.2	287.1	152.4
STEY100	101.6	4"	101.6	382.8	203.2



<p>THE METAL COMPANY TALK: 0508 304 316 VIEW: www.themetalcompany.co.nz TYPE: sales@themetalcompany.co.nz VISIT: 149 Alabama Rd, Blenheim 7201, NZ</p>	FILE	TMC-STEY-SPEC-SHEET.DWG		CODE	STEY	
	AUTHOR	CALEB G. - 16/08/23	STATUS	COMPLETE	SIZE	--
	CHECKED	BRENTLY F. - 30/08/23	SHEET	A4	DESC	TUBE EQUAL 'Y'
	REV	1.0	SCALE	NOT TO SCALE		