

**NOTES & FEATURES**

MATERIAL: STAINLESS STEEL  
 GRADE: 304/304L & 316/316L  
 STANDARD: AS1528.1  
 SURFACE FINISH: 320g  
 PRESSURE RATING: SEE DIMENSIONS TABLE\*  
 YIELD STRENGTH: 1,700 bar, Y5 & SAFETY FACTOR (1.6) USED IN WP  
 TENSILE STRENGTH: 4,850 bar, TS USED IN BP.

\*ERRORS & OMISSIONS EXCEPTED\*  
 \*ALL MEASUREMENTS IN MM UNLESS STATED OTHERWISE\*

FEATURES:  
 6.0 METER LENGTHS, PURCHASE PER METER.  
 WELD BEAD REMOVED  
 EDDY CURRENT TESTED

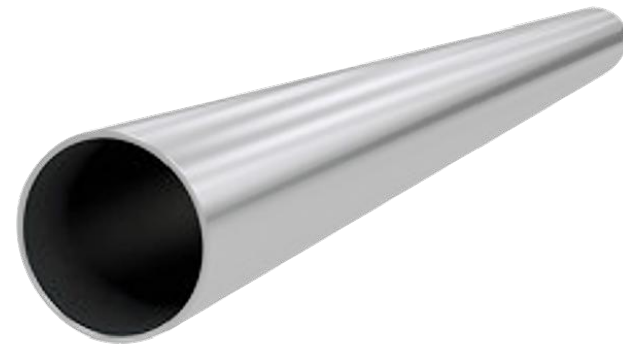
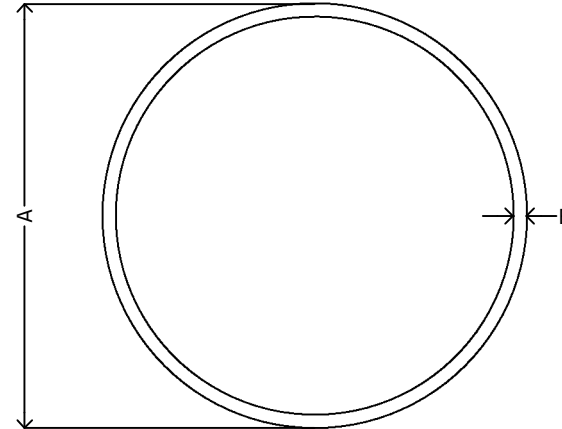
(\*) CALCULATED USING BARLOW'S FORMULA. THESE ARE NOT GUARANTEED VALUES.  
 THESE COVER THE TEMPERATURE RANGE OF -7°C TO +38°C

[VIEW ONLINE](#)



**DIMENSIONS**

CODE	GRADE	METRIC	INCH	A	B	WP (bar)	BP (bar)
SDT406	304/304L	6.35x0.9	1/4"	6.35 (±0.13)	0.9 (-0.10 +0.0)	301	1374
SDT408	304/304L	7.94x0.9	5/16"	7.94 (±0.13)	0.9 (-0.10 +0.0)	240	1098
SDT409	304/304L	9.53x1.2	3/8"	9.53 (±0.13)	1.2 (-0.10 +0.0)	268	1225
SDT412	304/304L	12.7x1.6	1/2"	12.7 (±0.13)	1.6 (-0.10 +0.0)	268	1222
SDT416	304/304L	15.88x1.6	5/8"	15.88 (±0.13)	1.6 (-0.10 +0.0)	214	976
SDT420	304/304L	19.05x1.6	3/4"	19.05 (±0.13)	1.6 (-0.10 +0.0)	179	817
SDT425	304/304L	25.4x1.6	1"	25.4 (±0.13)	1.6 (-0.10 +0.0)	134	611
SDT430	304/304L	31.8x1.6	1 1/4"	31.8 (±0.13)	1.6 (-0.10 +0.0)	107	488
SDT440	304/304L	38.1x1.6	1 1/2"	38.1 (±0.25)	1.6 (-0.10 +0.0)	89	407
SDT445#	304/304L	44.5x1.5	1 3/4"	44.5 (±0.25)	1.5 (-0.10 +0.0)	72	327
SDT450	304/304L	50.8x1.6	2"	50.8 (±0.25)	1.6 (-0.10 +0.0)	67	305
SDT465	304/304L	63.5x1.6	2 1/2"	63.5 (±0.25)	1.6 (-0.10 +0.0)	54	244
SDT475	304/304L	76.2x1.6	3"	76.2 (±0.25)	1.6 (-0.10 +0.0)	45	204
SDT4100	304/304L	101.6x1.6	4"	101.6 (±0.38)	1.6 (-0.10 +0.0)	33	153
SDT4125	304/304L	127.0x1.6	5"	127.0 (±0.38)	1.6 (-0.10 +0.0)	27	122
SDT4150	304/304L	152.4x1.6	6"	152.4 (±0.76)	1.6 (-0.10 +0.0)	22	102
SDT41502	304/304L	152.4x2.0	6"	152.4 (±0.76)	2.0 (-0.10 +0.0)	28	127
SDT4200	304/304L	203.2x2.0	8"	203.2 (±1.01)	2.0 (-0.10 +0.0)	21	95
SDT609	316/316L	9.53x1.2	3/8"	9.53 (±0.13)	1.2 (-0.10 +0.0)	268	1225
SDT612	316/316L	12.7x1.6	1/2"	12.7 (±0.13)	1.6 (-0.10 +0.0)	268	1222
SDT616	316/316L	15.88x1.6	5/8"	15.88 (±0.13)	1.6 (-0.10 +0.0)	214	976
SDT620	316/316L	19.05x1.6	3/4"	19.05 (±0.13)	1.6 (-0.10 +0.0)	179	817
SDT625	316/316L	25.4x1.6	1"	25.4 (±0.13)	1.6 (-0.10 +0.0)	134	611
SDT630	316/316L	31.8x1.6	1 1/4"	31.8 (±0.13)	1.6 (-0.10 +0.0)	107	488
SDT640	316/316L	38.1x1.6	1 1/2"	38.1 (±0.25)	1.6 (-0.10 +0.0)	89	407
SDT650	316/316L	50.8x1.6	2"	50.8 (±0.25)	1.6 (-0.10 +0.0)	67	305
SDT665	316/316L	63.5x1.6	2 1/2"	63.5 (±0.25)	1.6 (-0.10 +0.0)	54	244
SDT675	316/316L	76.2x1.6	3"	76.2 (±0.25)	1.6 (-0.10 +0.0)	45	204
SDT6100	316/316L	101.6x1.6	4"	101.6 (±0.38)	1.6 (-0.10 +0.0)	33	153
SDT6125	316/316L	127.0x1.5	5"	127.0 (±0.38)	1.5 (-0.10 +0.0)	27	122
SDT6150	316/316L	152.4x1.6	6"	152.4 (±0.76)	1.6 (-0.10 +0.0)	22	102
SDT6200	316/316L	203.2x1.6	8"	203.2 (±1.01)	1.6 (-0.10 +0.0)	21	95



<p><b>THE METAL COMPANY</b>                  TALK: 0508 304 316                  VIEW: www.themetalcompany.co.nz                  TYPE: sales@themetalcompany.co.nz                  VISIT: 149 Alabama Rd, Blenheim 7201, NZ</p>	FILE NAME	TMC-SDT.DWG		CODE	SDT	SIZE	6.35 (1/4") TO 203.2 (8")
	AUTHOR	CALEB G. - 29/11/23	FOR	THE METAL COMPANY	DESCRIPTION		
	APPROVED	BRENTLY F. - 30/11/23	CO.	S. FISHER & SONS			
	REVISION	1.0	SHEET	A4	SCALE	NOT TO SCALE	