

**NOTES & FEATURES**

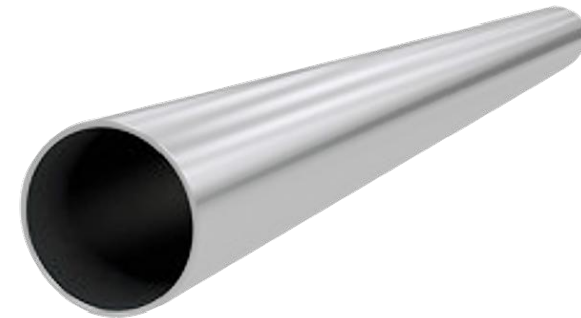
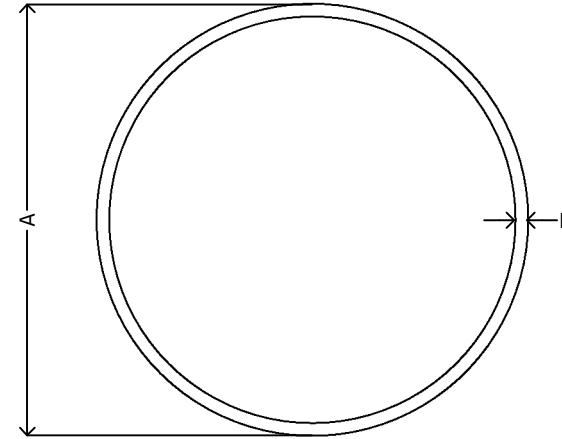
MATERIAL: STAINLESS STEEL  
 GRADE: 304/304L & 316/316L  
 STANDARD: ASTM A554  
 SURFACE FINISH: 320g  
 PRESSURE RATING: SEE DIMENSIONS TABLE\*

ERRORS & OMISSIONS EXCEPTED  
 ALL MEASUREMENTS IN MM UNLESS STATED OTHERWISE

FEATURES:  
 6.0 METER LENGTHS, PURCHASE PER METER.  
 EDDY CURRENT TESTED

(\*) THESE VALUES ARE TYPICAL VALUES AND ARE NOT A GUARANTEE OF MAX OR MIN VALUES.

[VIEW ONLINE](#)



**DIMENSIONS**

CODE	GRADE	METRIC	INCH	A	B	-70°C TO +380°C		+380° TO +538°C	
						WP (bar)	BP (bar)	WP (bar)	BP (bar)
SGPT425	304/304L	25.4x1.5	1"	25.4 (±0.15)	1.5 (-0.10 +0.00)	133	630	89	419
SGPT430	304/304L	31.8x1.5	1 1/4"	31.8 (±0.15)	1.5 (-0.10 +0.00)	114	537	75	357
SGPT440	304/304L	38.1x1.5	1 1/2"	38.1 (±0.15)	1.5 (-0.10 +0.00)	76	360	50	239
SGPT445	304/304L	44.5x1.5	1 3/4"	44.5 (±0.15)	1.5 (-0.10 +0.00)	76	360	50	239
SGPT450	304/304L	50.8x1.5	2"	50.8 (±0.15)	1.5 (-0.10 +0.00)	66	315	44	209
SGPT465	304/304L	63.5x1.5	2 1/2"	63.5 (±0.15)	1.5 (-0.10 +0.00)	53	252	35	167
SGPT475	304/304L	76.2x1.5	3"	76.2 (±0.15)	1.5 (-0.10 +0.00)	44	209	29	139
SGPT4100	304/304L	101.6x1.5	4"	101.6 (±0.15)	1.5 (-0.10 +0.00)	33	157	22	104
SGPT4125	304/304L	127.0x1.5	5"	127.0 (±0.15)	1.5 (-0.10 +0.00)	33	152	22	101
SGPT4150	304/304L	152.4x1.5	6"	152.4 (±0.15)	1.5 (-0.10 +0.00)	22	105	14	69
SGPT4200	304/304L	203.2x2.0	8"	203.2 (±0.20)	2.0 (-0.10 +0.00)	20	95	13	63
SGPT625	316/316L	25.4x1.5	1"	25.4 (±0.15)	1.5 (-0.10 +0.00)	133	630	89	419
SGPT630	316/316L	31.8x1.5	1 1/4"	31.8 (±0.15)	1.5 (-0.10 +0.00)	114	537	75	357
SGPT640	316/316L	38.1x1.5	1 1/2"	38.1 (±0.15)	1.5 (-0.10 +0.00)	76	360	50	239
SGPT650	316/316L	50.8x1.5	2"	50.8 (±0.15)	1.5 (-0.10 +0.00)	66	315	44	209
SGPT665	316/316L	63.5x1.5	2 1/2"	63.5 (±0.15)	1.5 (-0.10 +0.00)	53	252	35	167
SGPT675	316/316L	76.2x1.5	3"	76.2 (±0.15)	1.5 (-0.10 +0.00)	44	209	29	139
SGPT6100	316/316L	101.6x1.5	4"	101.6 (±0.15)	1.5 (-0.10 +0.00)	33	157	22	104

<p><b>THEMETALCOMPANY</b>                  TALK: 0508 304 316                  VIEW: www.themetalcompany.co.nz                  TYPE: sales@themetalcompany.co.nz                  VISIT: 149 Alabama Rd, Blenheim 7201, NZ</p>	FILE NAME	TMC-SGPT.DWG		CODE	SGPT	SIZE	25.4 (1") TO 203.2 (4")
	AUTHOR	CALEB G. - 07/12/23	FOR	THE METAL COMPANY	DESCRIPTION STAINLESS STEEL GENERAL PURPOSE TUBE ASTM A554		
	APPROVED	BRENTLY F. - 16/12/23	CO.	S. FISHER & SONS			
	REVISION	1.0	SHEET	A4	SCALE	NOT TO SCALE	